

GORE-TEX[®] Suture

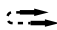

for CAPIO[®] Suture Capturing Devices

*The ideal companion for
your gynecologic procedures!*

GORE-TEX[®] Suture is a unique, microporous, nonabsorbable monofilament made of expanded polytetrafluoroethylene (ePTFE), the same proven material used in other GORE Medical Products.

- ▶ Minimal friction enables precise knot positioning
- ▶ Soft, flexible, and compressible for ease in suturing
- ▶ Monofilament expanded PTFE thread fosters a benign tissue response

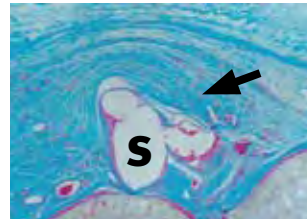
The CAPIO[®] Suture Capturing Device sold by Boston Scientific Corporation is designed to allow the user to drive and retrieve a suture in one step. Applications include sacrospinous ligament fixation.

Needle	Thread Size	Thread Length	Catalogue Number
 PS-4	CV-2	48" (122 cm)	2U22A
 PS-4, THX-26	CV-2	48" (122 cm)	M2U28A

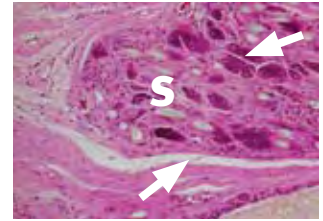




Micrograph showing a typical response to GORE-TEX® Suture (S). Notice the minimal capsule formation and limited inflammatory response. H&E stain (25X).



Micrograph showing the response to polypropylene suture (S). Capsule formation is more pronounced than with GORE-TEX® Suture. Trichrome stain (25X).



Micrograph showing the response to a braided polyester suture (S). In comparison with the response to monofilament sutures the inflammatory response is generally greater with multifilament sutures. H&E stain (25X).

Other GORE-TEX® Sutures Commonly Used in Gynecological Procedures



MMK/Birch Bladder Neck Suspensions

Needle	Thread Size	Thread Length	Catalogue Number
TLX-25	CV-0	48" - 122 cm	0U03
THX-36	CV-0	36" - 91 cm	0N07
TLX-25	CV-2	48" - 122 cm	2U17
THX-26	CV-2	36" - 91 cm	2N05
		48" - 122 cm	2U05

Pereyra/Stamey Urethropexy

Needle	Thread Size	Thread Length	Catalogue Number
TFX-25	CV-0	36" - 91 cm	0N09
TFX-25	CV-2	36" - 91 cm	2N19

Sacrocolpopexy, Sacrospinous Ligament Fixation

Needle	Thread Size	Thread Length	Catalogue Number
THX-26	CV-2	36" - 91 cm	2N05

Selected References:

Lind LR, Choe J, Bhatia NN. An In-line suturing device to simplify sacrospinous vaginal vault suspension. *Obstetrics & Gynecology* 1997;89(1):129-132.

Setzen G, Williams EF III. Tissue response to suture materials implanted subcutaneously in a rabbit model. *Plastic & Reconstructive Surgery* 1997;100(7):1788-1795

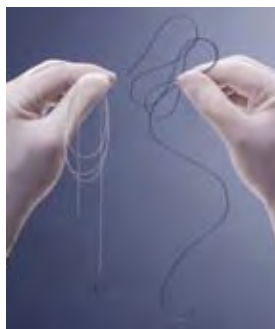


W. L. GORE & ASSOCIATES, INC.
Flagstaff, AZ 86004

800.437.8181 (US)
928.779.2771 (US)
00800.6334.4673 (EU)

For international contacts and additional product information, visit goremedical.com

Product(s) listed may not be available in all markets pending regulatory clearance. GORE, GORE-TEX® and designs are trademarks of W. L. Gore and Associates, Inc. CAPIO® is a trademark of Boston Scientific Corp. CAPIO device is distributed by Boston Scientific Corp. © 2008 W. L. Gore & Associates, Inc. AL2972-EN1 JANUARY 2008



The GORE-TEX® Suture on the left is soft and supple with little package memory. The polypropylene suture on the right is stiffer and retains its packaged shape.

For complete availability of GORE-TEX® Suture, go to goremedical.com, or call your Gore sales associate.