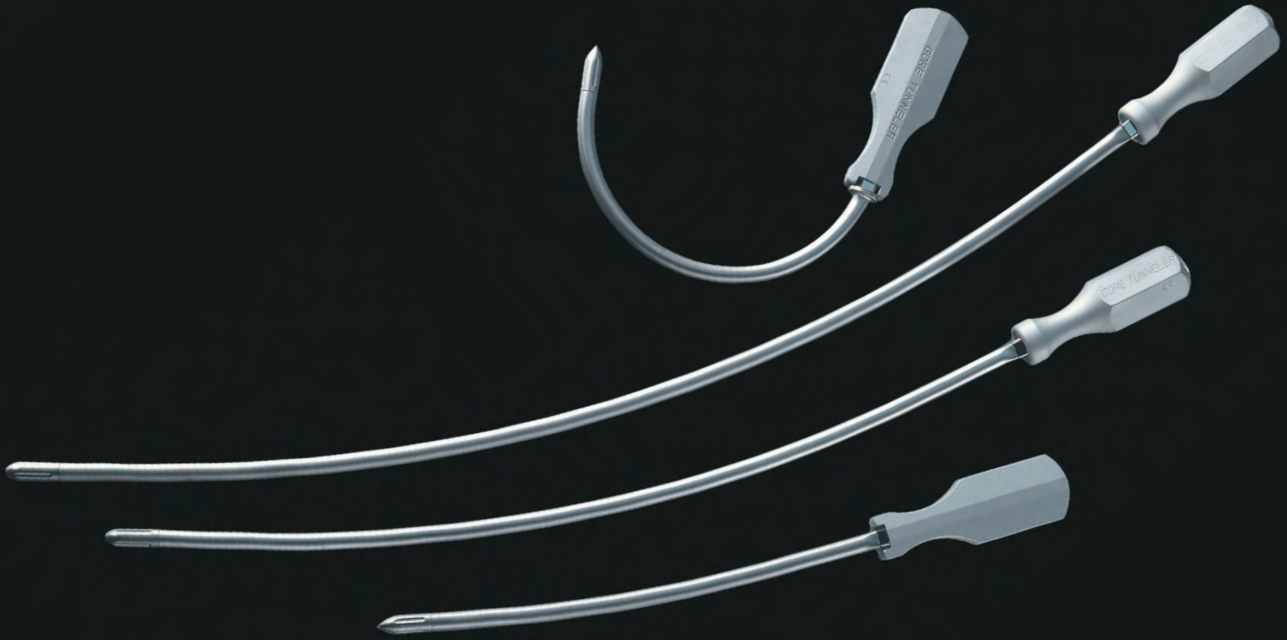


# Accurately placed

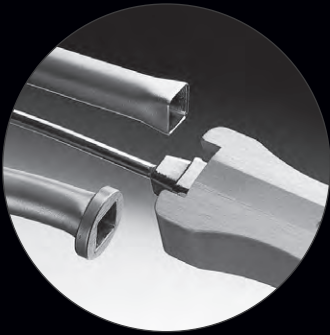
*and precisely sized tissue tunnels*



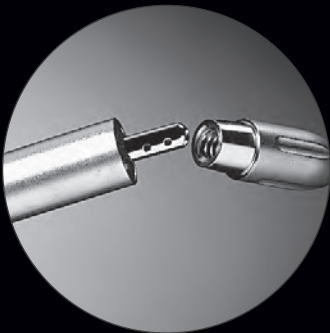
## ► CONFIGURATIONS



PERFORMANCE  
by design



*Unique handle design prevents unwanted sleeve rotation and allows accurate control of the assembly*



*Removable tips expose the graft attachment point*



*Sleeves sized to accept either non-ringed or ringed GORE® Vascular Grafts*



*Two tip designs are available for various tunneling requirements*

*The GORE® Tunneler aids in creating accurately placed and precisely sized tissue tunnels. Available configurations allow the selection of the most appropriate tunneler, whether for bypass grafting or creation of a synthetic AV fistula.*




*The need for counter incisions in long bypass procedures is reduced or eliminated.*

*The hollow sleeve design of the GORE® Tunneler prevents graft wetting, which may occur when pulling a graft through a tissue tunnel — reducing the potential for seroma.<sup>1, 2</sup>*

*Close approximation of tissue to graft throughout the length of the tunnel facilitates tissue ingrowth.<sup>3</sup> Trauma and resultant swelling may be minimized, which is especially valuable in soft tissue tunnels created in access or extra-anatomic bypass procedures.*

*The risk of twisting or kinking the graft during placement is minimized.<sup>4</sup>*

## Ordering Information

CATALOGUE NUMBER	DESCRIPTION	CONSISTING OF	
<b>STANDARD CURVE TUNNELERS</b>			
TUN60850	Kit – 6 and 8 mm x 50 cm	50 cm standard curve handle rod Handle cap 6 mm x 50 cm standard curve sleeve 6 mm tip 8 mm x 50 cm standard curve sleeve 8 mm tip	
TUN60865	Kit – 6 and 8 mm x 65 cm	65 cm standard curve handle rod Handle cap 6 mm x 65 cm standard curve sleeve 6 mm tip 8 mm x 65 cm standard curve sleeve 8 mm tip	
<b>STANDARD CURVE ACCESS TUNNELERS</b>			
TUN06025	6 mm x 25 cm	25 cm standard curve handle rod 6 mm x 25 cm standard curve sleeve 6 mm dissecting tip	
TUN08025	8 mm x 25 cm	25 cm standard curve handle rod 8 mm x 25 cm standard curve sleeve 8 mm tip	
TUN68025	Kit – 6 and 8 mm x 25 cm	25 cm standard curve handle rod all sleeves and tips listed above	
<b>FULL CURVE ACCESS TUNNELERS</b>			
TUN6C025	6 mm x 25 cm	25 cm full curve handle rod 6 mm x 25 cm full curve sleeve 6 mm dissecting tip	
<b>REPLACEMENT PARTS</b>			
TIPA6	6 mm dissecting tip		
TIP06	6 mm tip		
TIP08	8 mm tip		
TCAP	Cap for 50 and 65 cm arterial bypass tunneler handles		

## References

- <sup>1</sup> Roedersheimer LR. Prosthetic graft fistulas: the expanded PTFE graft. In: Andreucci VE, ed. *Vascular and Peritoneal Access for Dialysis*. Boston, MA: Kluwer Academic Publishers;1989:73-89.
- <sup>2</sup> Bolton W, Cannon JA. Seroma formation associated with PTFE vascular grafts used as arteriovenous fistulae. *Dialysis & Transplantation* 1981;10(1):60-3.
- <sup>3</sup> Coleman CL, Noon GP. Future developments in vascular access. In: Sommer BG, Henry ML, eds. *Vascular Access for Hemodialysis*. Chicago, IL: W.L. Gore & Associates, Inc. & Pluribus Press, Inc; 1989:16:168-181.
- <sup>4</sup> Davidson IJA. PTFE bridge grafts. In: Davidson IJA, ed. *On Call in Vascular Access*. Austin, TX: R.G. Landes Company; 1996:3:39-76.



### **W. L. GORE & ASSOCIATES, INC.**

Flagstaff, AZ 86004

+65.67332882 (Asia Pacific)  
00800.6334.4673 (Europe)  
800.437.8181 (United States)  
928.779.2771 (United States)

[goremedical.com](http://goremedical.com)

Products listed may not be available in all markets.

GORE®, PERFORMANCE BY DESIGN, and designs are trademarks of W. L. Gore & Associates.

© 1998, 2000, 2002, 2004, 2008, 2010 W. L. Gore & Associates, Inc. AA0129-EN7 MAY 2010