



Clinical Registry Results

W. L. Gore & Associates, Inc., conducted a Clinical Registry Program involving 130 centers throughout the United States. Information was obtained from 2214 patients and their health care professionals.

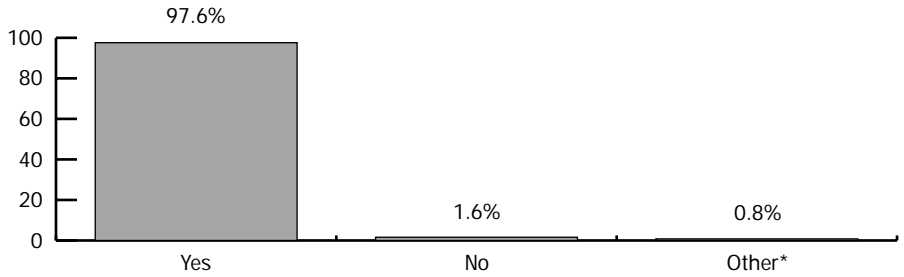
The program ran from March 1991 through June 1993.

* Other: 17 patients were undecided, or chose not to respond.

** Skin condition was unreported on 15 patients.

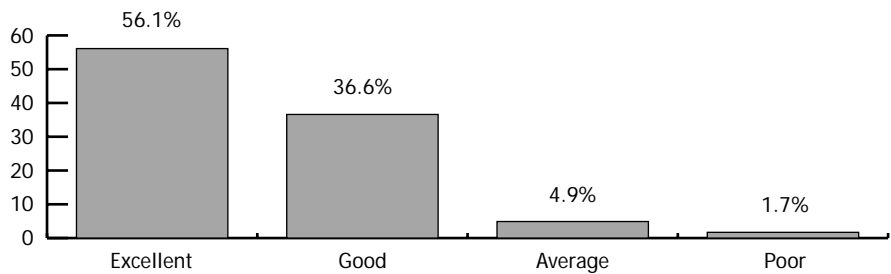
Recommendation

Patients recommending PROCEL® Cast Liner



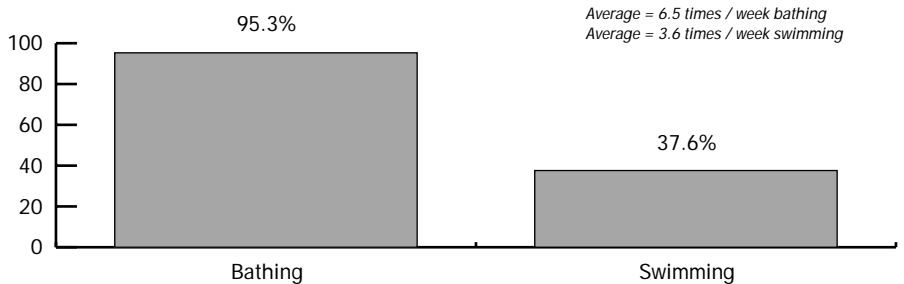
Skin Condition

Evaluation by health care professional at cast removal**

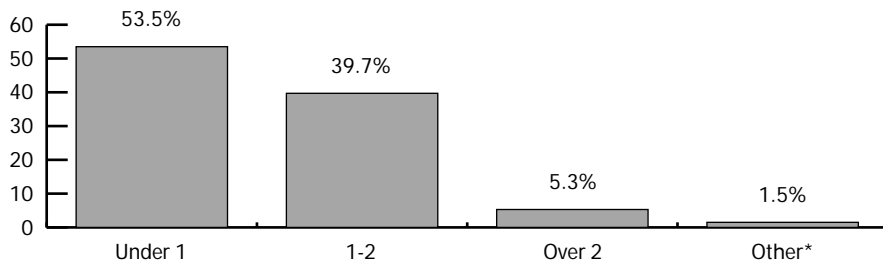


Bathing / Swimming

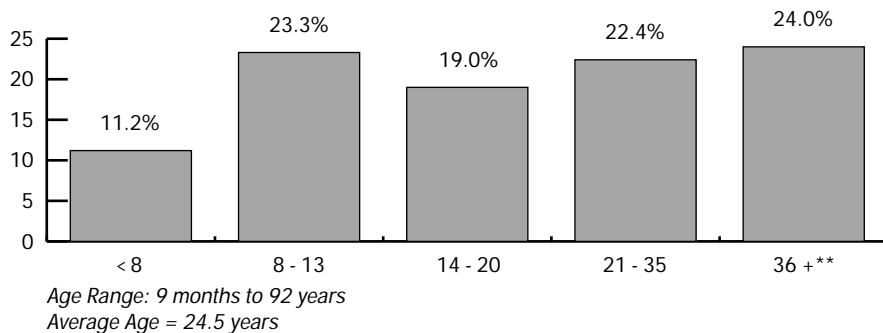
Means of getting the cast wet



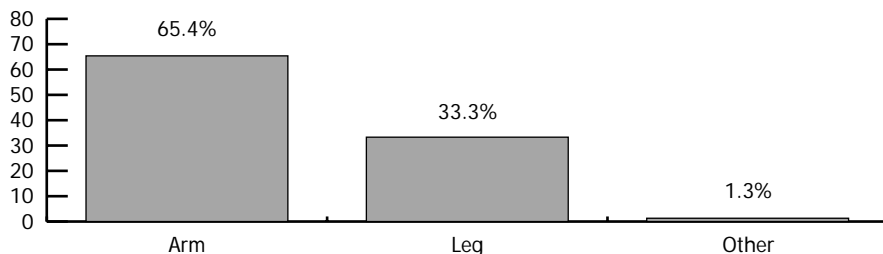
► **Drying Time (hours)**
Time it took for cast to feel dry



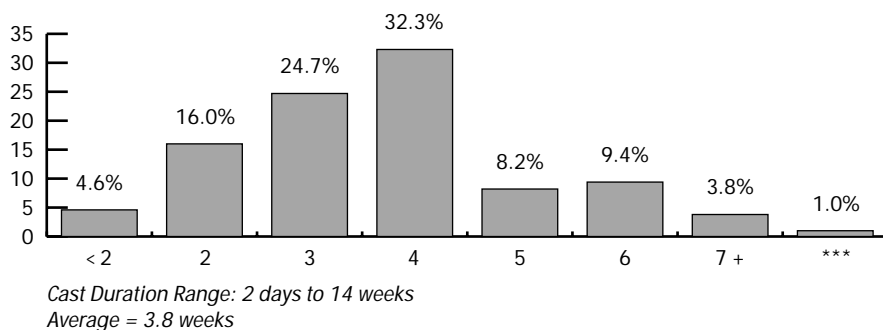
► **Age**



► **Cast Location**



► **Cast Duration (in weeks)**



* 34 Patients chose not to get cast wet.

** Breakdown of 531 patients age 36 or older:
 378 patients between 36-55;
 116 patients between 56-70;
 37 patients between 71-92.

*** Duration unknown.



W. L. Gore & Associates, Inc.
 Flagstaff, AZ 86004

For Information and
 to order call:

Toll-Free
 866 / WET-CAST
 866 / 938-2278
www.castliner.com