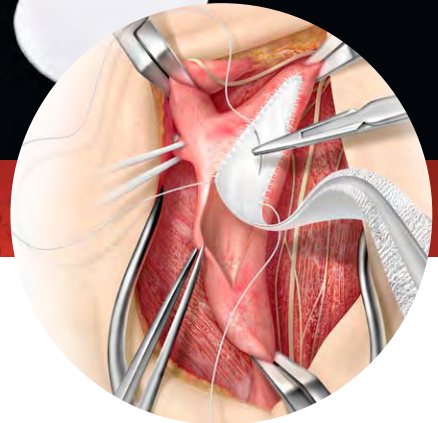


We've Closed the Gap

on Suture Line Leakage



PERFORMANCE through experience

FEATURES / BENEFITS:

Reduces Suture Hole Bleeding*

Non-Biologic

Low-Thrombogenicity

High Strength

Non-Fraying

Ease of Handling: Conformable

Resterilizable

**Data on file*

GORE
ACUSEAL
CARDIOVASCULAR PATCH

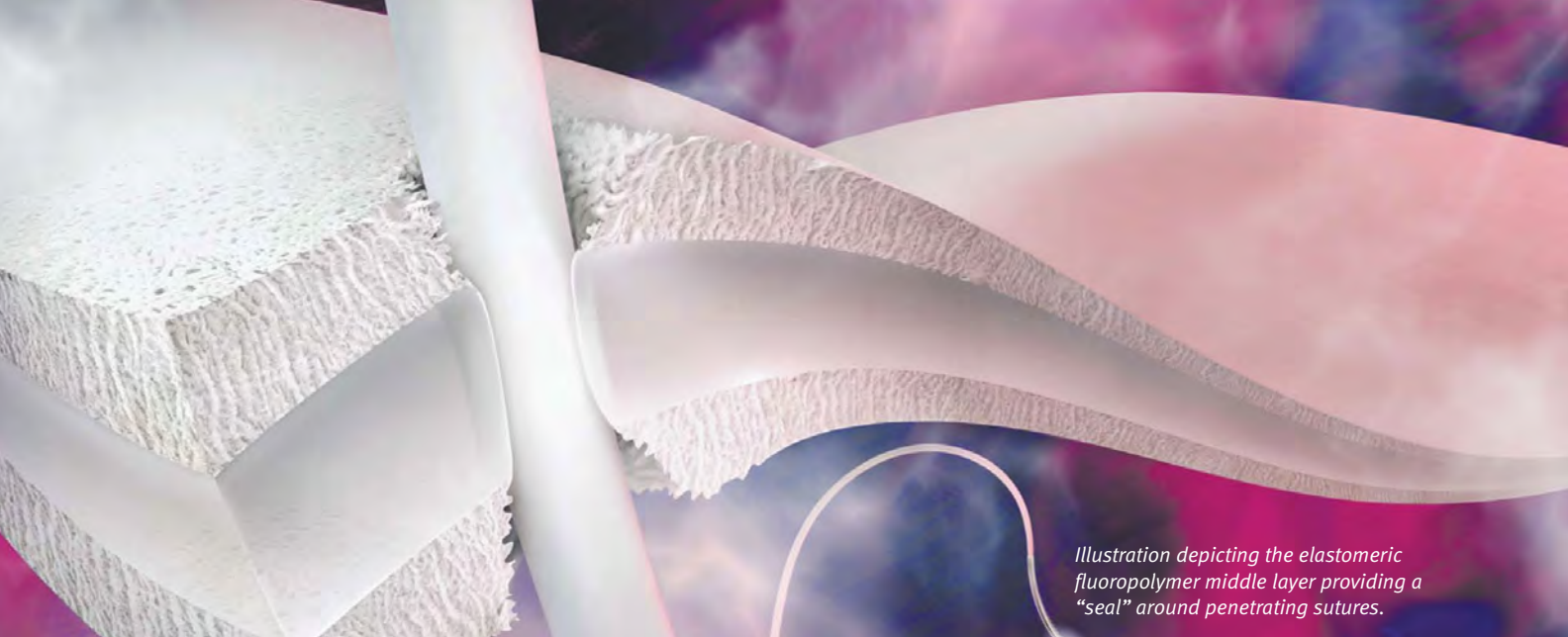
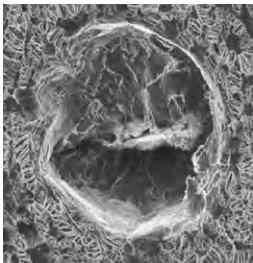
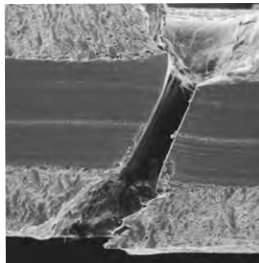


Illustration depicting the elastomeric fluoropolymer middle layer providing a "seal" around penetrating sutures.



Surface view
250x magnification



Cross-section view
100x magnification

Surface and cross-sectional Scanning Electron Micrographs show the sealing effect of the elastomeric fluoropolymer where pierced.

SIZES AVAILABLE

APPLICATION	CATALOGUE NUMBER	WIDTH X LENGTH	THICKNESS
VASCULAR	1CVX002	1 cm x 9 cm	0.5 mm
	1CVX003	0.8 cm x 7.5 cm	0.5 mm
	1CVX004	2.5 cm x 15 cm	0.5 mm
CARDIAC	1CVX101	3 cm x 6 cm	0.5 mm
	1CVX102	5 cm x 7.5 cm	0.5 mm
	1CVX103	3 cm x 3 cm	0.5 mm

INDICATIONS

For use in cardiovascular patching such as cardiac, great vessel, and peripheral vascular reconstructions.

WARNING

Preclinical animal studies suggest that tissue ingrowth may be enhanced in this patch as compared to ePTFE alone. Clinical data concerning the enhanced ingrowth is currently unavailable.



W. L. GORE & ASSOCIATES, INC.
Flagstaff, AZ 86004

+65.67332882 (Asia Pacific) 800.437.8181 (United States)
00800.6334.4673 (Europe) 928.779.2771 (United States)

goremedical.com

Products listed may not be available in all markets.
GORE, ACUSEAL, and designs are trademarks of W. L. Gore & Associates.
© 2005, 2008, 2009 W. L. Gore & Associates, Inc. AH1341-EN3 JULY 2009