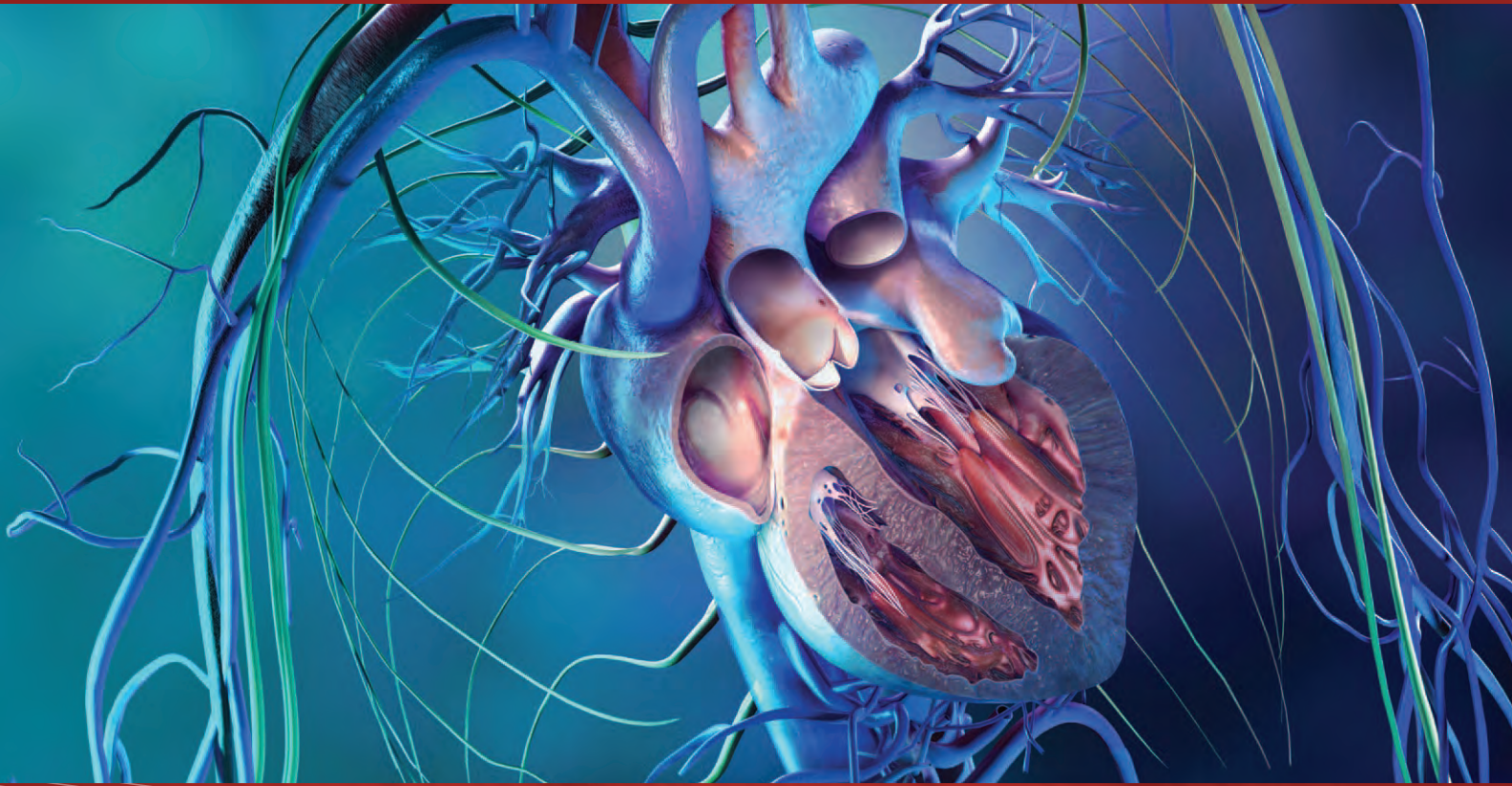


*More than 35 years of experience*  
*with ePTFE in medical implants*



**PERFORMANCE** through experience



*Our heads.*

*Your hands.*

*Their hearts.*

*Gore and cardiothoracic surgeons work together*

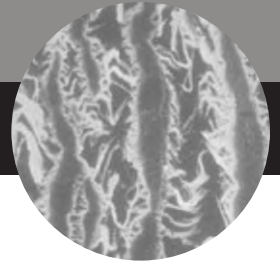
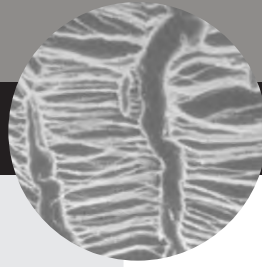
*to create innovative solutions for cardiac patients.*

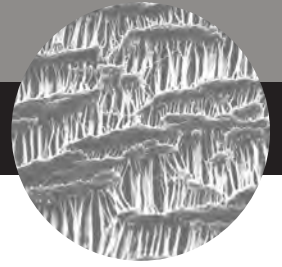
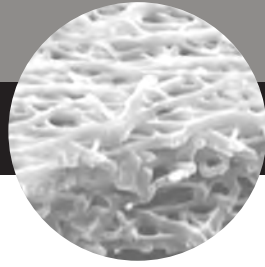
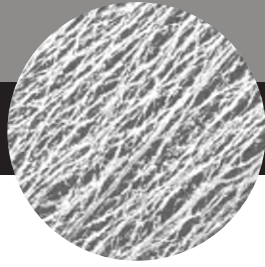
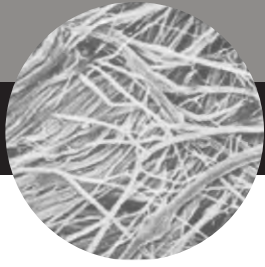
*Gore cardiothoracic products feature advanced*

*ePTFE-based polymers and other materials*

*specifically designed to work in harmony with the*

*body's own tissues and restore normal functions.*





### *More Than 30 Million Clinical Implants of Gore Medical Products*

The success of more than 30 million clinical implants is evidence of the quality of Gore Medical Products. Our innovative, ePTFE-based products have demonstrated superior biocompatibility and inertness in a wide range of applications, including: cardiothoracic, vascular and endovascular surgery, neurosurgery, hernia repair and thoracic reconstruction.

### *More Than 30 Years of Personalized Service*

More than three decades of responsive, high quality service has provided Gore with a reputation for innovation, integrity and ingenuity. This exceptional track record has enabled us to develop a strong and lasting relationship with the cardiothoracic community. Simply put, Gore delivers the products you know and the technical expertise and unsurpassed customer service you expect from a company you trust and respect.

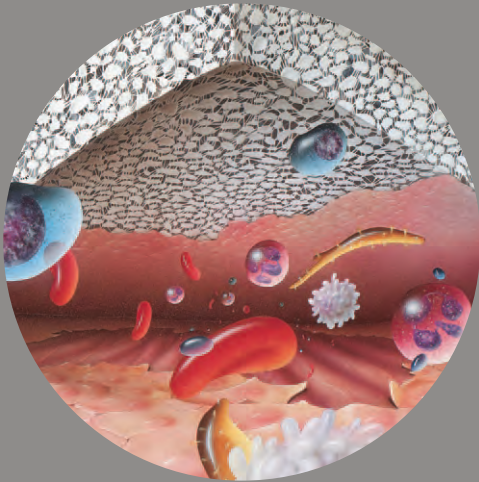
### *World Class In-House Research Facility*

Gore has established one of the world's foremost research facilities dedicated to the testing and development of innovative, advanced and high-performance medical products.

### *Published Studies*

The performance of Gore Medical Products has been clearly documented in more than 1,200 comprehensive studies published by renowned physicians.

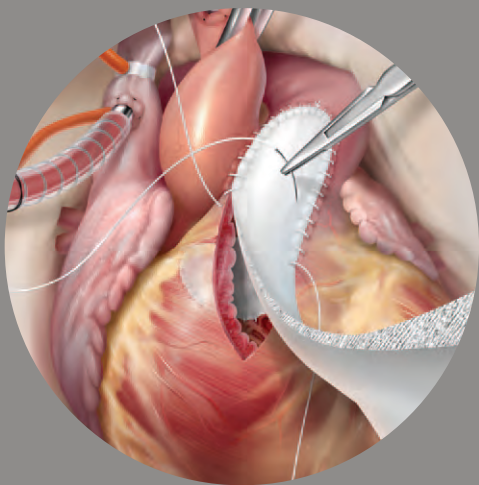
# CARDIOTHORACIC PRODUCTS



## **GORE® PRECLUDE® Pericardial Membrane**

GORE® PRECLUDE® Pericardial Membrane is an effective solution for minimizing tissue attachment to the material during cardiac reconstructions or repair within the pericardial space in procedures with a likelihood of reoperation. Examples include congenital heart defect repair, coronary artery bypass grafts (CABG), valve replacement in young patients and ventricular assist device implantation.

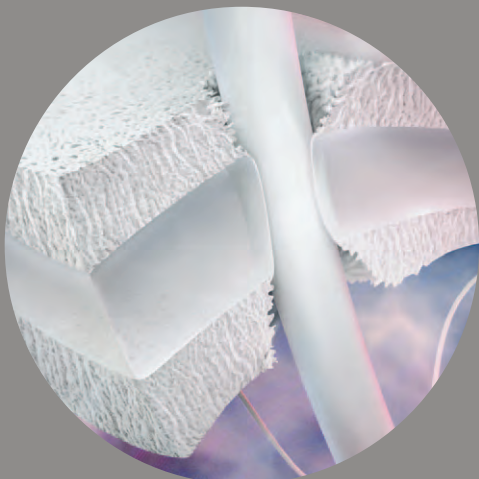
*For adult and pediatric cardiac surgeries, ventricular assist devices*



## **GORE-TEX® Cardiovascular Patch**

Non-biologic and conformable. The patch features high strength-resistance to aneurysmal dilatation, proven clinical safety and efficacy, multiple thicknesses for optimal tissue approximation and ease of handling with no rinsing required.

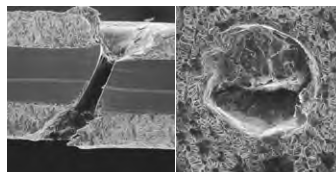
*For adult and pediatric patch repairs*



## **GORE® ACUSEAL Cardiovascular Patch**

Advanced fluoropolymer technology enables GORE® ACUSEAL Cardiovascular Patch to “seal” around the penetrating suture and decrease suture line bleeding by as much as 88%<sup>†</sup>. This improvement, combined with enhanced suture retention, multi-directional strength and low thrombogenicity, sets the patch apart from other surgical biomaterials.

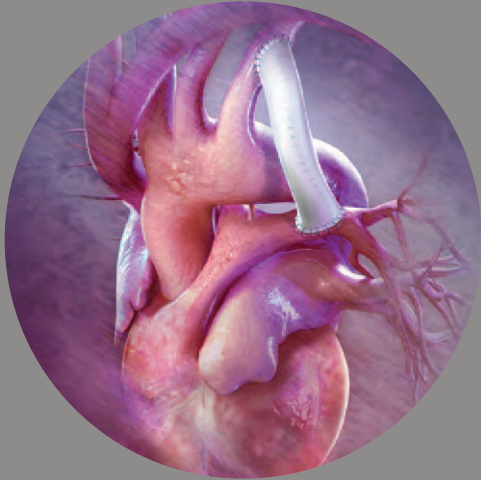
*For adult and pediatric patch repairs*



*Cross-section 100x*

*Surface 250x*

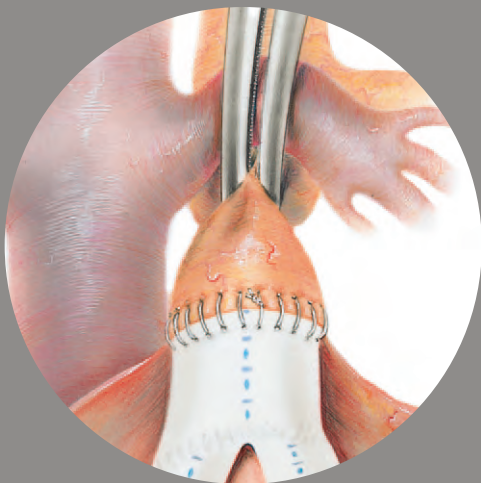
<sup>†</sup>Data on File



### **GORE-TEX® Vascular Graft Configured For Pediatric Shunt** **GORE® PROPATEN® Vascular Graft Configured for Pediatric Shunt**

These pediatric shunts are the choice of surgeons worldwide for use as shunts in cardiac procedures. GORE-TEX® Vascular Graft offers such benefits as ease of implantation and take-down at total correction, good patency, and avoidance of excessive shunt flow. The thin-wall stretch configuration provides kink resistance, improved handling and better tissue approximation for use in neonates. With the addition of PROPATEN® Bioactive Surface, the optimal graft performance you expect for these challenging patients is now available with enhanced resistance to thrombus.

*For cyanotic congenital heart defects*



### **GORE-TEX® Vascular Graft**

Available in stretch and non-stretch, the large diameter GORE-TEX® Vascular Graft offers excellent graft performance in the most demanding vascular procedures. The graft is inert, biocompatible, strong, conformable and easy-to-handle. It requires no preclotting, resists dilatation and the spread of infection, and ensures utmost thrombectomy safety.

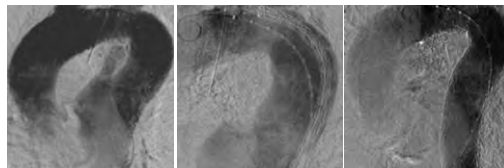
*For Fontan tunnels, aortic and pulmonary interruptions, venous connections (large diameter)*

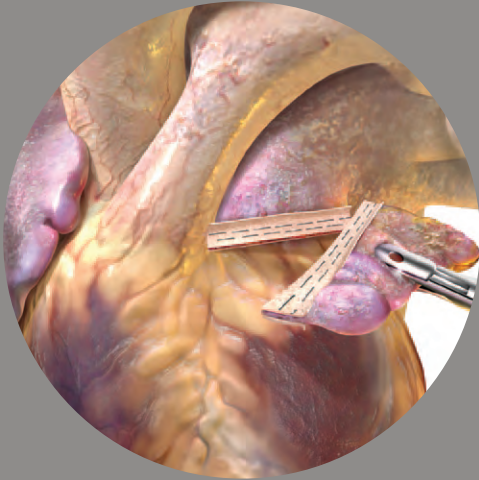


### **GORE® TAG® Thoracic Endoprosthesis**

The GORE® TAG® Thoracic Endoprosthesis provides physicians with a minimally invasive option for safely and effectively treating patients with Thoracic Aortic Aneurysms. With more than 48,000 devices distributed and more than 28,500 patients treated worldwide, the GORE® TAG® Thoracic Device has established confidence through reliable clinical performance and patient outcomes.

*For descending thoracic aortic aneurysms*

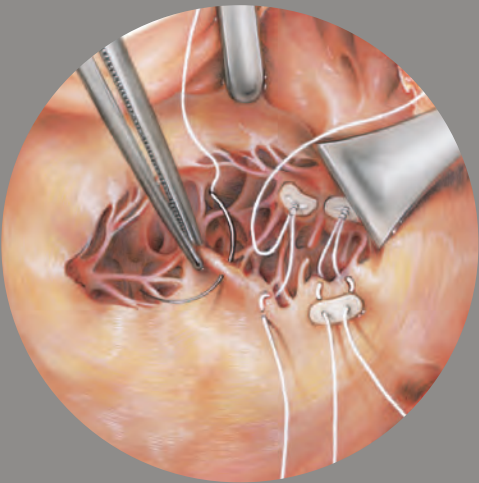




### **GORE® SEAMGUARD® Bioabsorbable Staple Line Reinforcement**

Safe and effective in reducing staple line bleeding, GORE® SEAMGUARD® Bioabsorbable Staple Line Reinforcement is ideal for left atrial appendage ligation or lung resection. Fabricated from a fiber web of bioabsorbable copolymer, this non-biological material requires no pretreatment. Easy to load and fire, the material is extremely thin and uniform in thickness to avoid incomplete staple closure. The material retains measurable strength for four to five weeks and completely absorbs in six months.

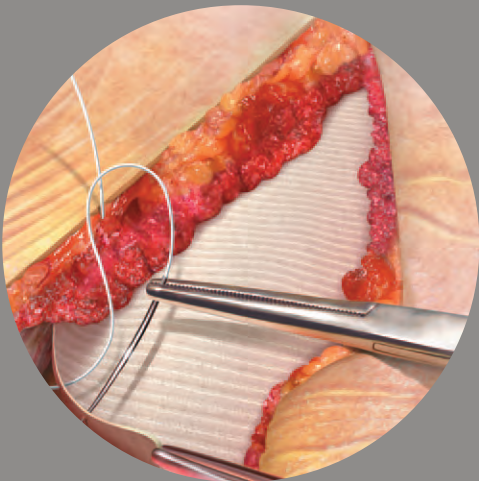
*For left atrial appendage ligation, lung resection*



### **GORE-TEX® Suture**

An ePTFE, nonabsorbable monofilament suture that is an ideal companion to the Gore cardiac surgical products. Special configurations are available for chordae tendineae repair or replacement, and GORE-TEX® Suture is the only suture indicated for this use.

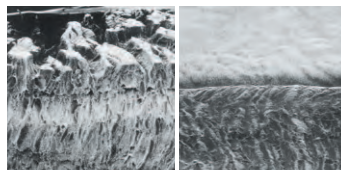
*For the repair and replacement of chordae tendineae*



### **GORE® DUALMESH® PLUS Biomaterial**

GORE® DUALMESH® PLUS Biomaterial features a two-surface design that promotes cellular ingrowth into the CORDUROY Surface and minimizes tissue attachment to the smooth surface. Furthermore, it is coated with two antimicrobial agents that synergistically inhibit microbial colonization of the device for up to fourteen days post implantation.

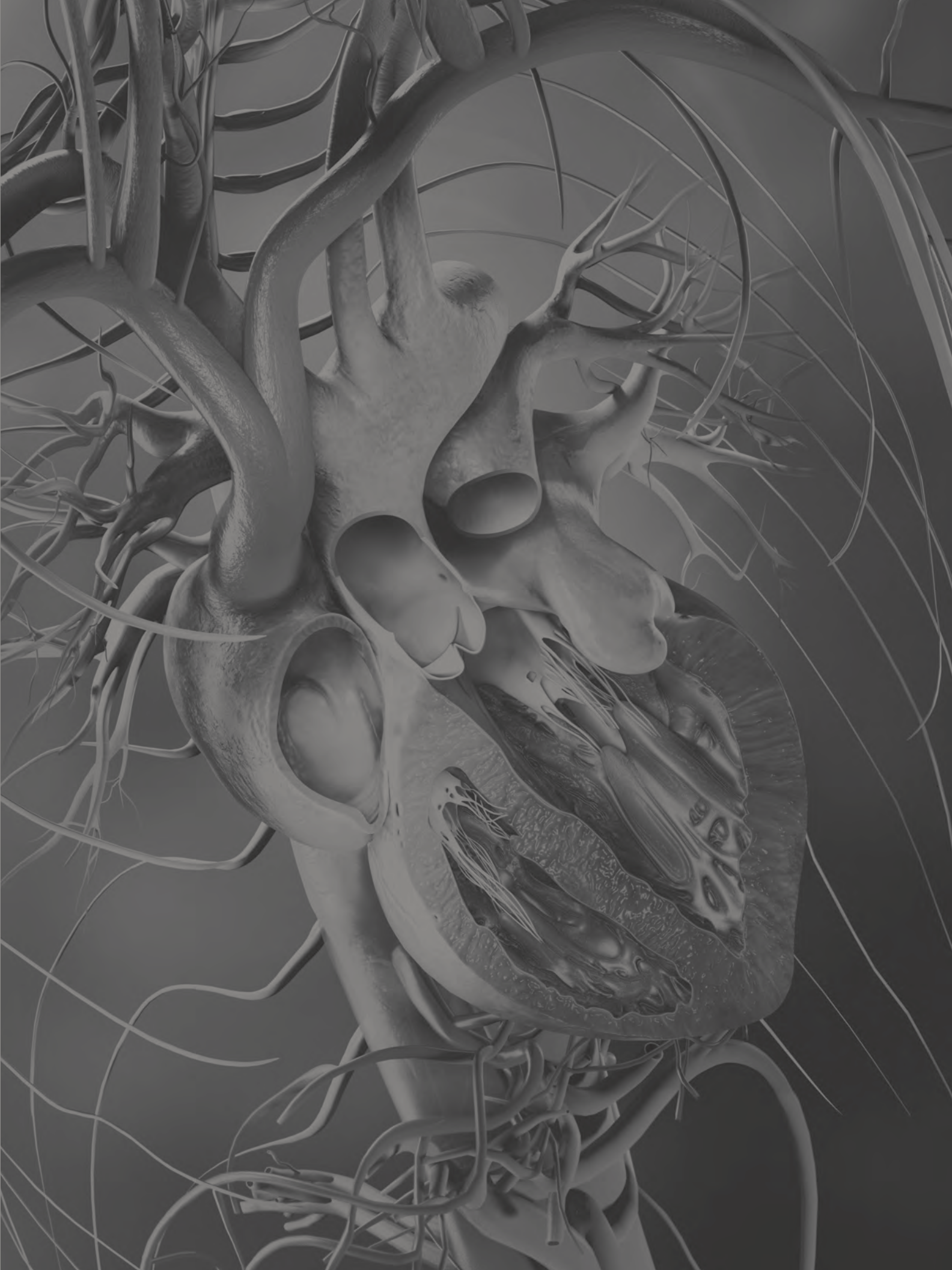
*For delayed sternal closure, chest wall reconstruction, extrapleural pneumonectomy*



*CORDUROY Surface  
for tissue  
ingrowth 100x*

*Smooth surface  
100 x*

Products are available in a variety of diameters and lengths





**W. L. GORE & ASSOCIATES, INC.**  
Flagstaff, AZ 86004

+65.67332882 (Asia Pacific)  
00800.6334.4673 (Europe)  
800.437.8181 (United States)  
928.779.2771 (United States)

**[goremedical.com](http://goremedical.com)**

Products listed may not be available in all markets.

GORE®, GORE-TEX®, CORDUROY, DUALMESH®, DUALMESH® PLUS, PERFORMANCE THROUGH EXPERIENCE, PRECLUDE®, SEAMGUARD®, TAG®, and designs are trademarks of W. L. Gore & Associates.

© 2007, 2009, 2010 W. L. Gore & Associates, Inc. AK0363-EN4 DECEMBER 2010