



# Ready to Switch...

to a non-biological solution?

- ▶ ZERO RISK of animal-source disease transmission<sup>1, 2</sup>
- ▶ More than 25 million clinical implants using Gore Medical Products
- ▶ More than 30 years of clinical success with Gore ePTFE technology

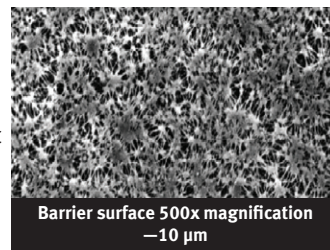
- ▶ Studies have concluded that ePTFE membrane is a safe and effective non-biological dura<sup>3-11</sup> without the complications observed with biological and other synthetic materials<sup>12-15</sup>. The use of GORE PRECLUDE<sup>®</sup> MVP<sup>®</sup> Dura Substitute and GORE PRECLUDE<sup>®</sup> PDX Dura Substitute obviates the immunogenicity and disease-transmission concerns of dural grafts derived from animal and human tissue<sup>2, 16-22</sup>.
- ▶ Because they are constructed of non-biological materials, GORE PRECLUDE<sup>®</sup> MVP<sup>®</sup> Dura Substitute and GORE PRECLUDE<sup>®</sup> PDX Dura Substitute do not have the inherent disease-transmission risk of biological materials. The biological safety of Gore's ePTFE has been demonstrated in millions of procedures since 1975.



- Not manufactured from bovine sources, 100% fluoropolymer.
- World Health Organization. *Spongiform Encephalopathies: New Recommendations on Medical Products*. [press release]. Geneva, Switzerland: World Health Organization;1997.
- Aliredjo RP, de Vries J, Menovsky T, Grotenhuis JA, Merx J. The use of GORE-TEX membrane for adhesion prevention in tethered spinal cord surgery: technical case reports. *Neurosurgery* 1999;44(3):674-678.
- Hatanka M. Expanded polytetrafluoroethylene surgical membrane for dura mater substitutes. [in Japanese]. *Research of New Medical Devices* 1992;1(2):183-193.
- Inoue HK, Kobayashi S, Ohbayashi K, Kohga H, Nakamura M. Treatment and prevention of tethered and retethered spinal cord using a Gore-Tex surgical membrane. *Journal of Neurosurgery* 1994;80(4):689-693.
- Miyake S, Tamaki N, Nagashima T, Kurata H, Eguchi T, Kimura H. Idiopathic spinal cord herniation. *Journal of Neurosurgery* 1998;88(2):331-335.
- Nazzaro JM, Craven DE. Successful treatment of postoperative meningitis due to *Haemophilus Influenzae* without removal of an expanded polytetrafluoroethylene dural graft. *Clinical Infectious Diseases* 1998;26(2):516-518.
- Shirane R, Yoshimoto T. Surgical treatment for delayed tethered cord syndrome after operation for spinal dysraphism. *Neurosurgery* 1994;13:154-160.
- Tekkök IH. Spontaneous spinal cord herniation: case report and review of the literature. *Neurosurgery* 2000;46(2):485-492.
- van Calenberg F, van Loon J, Goffin J, et al. Prospective multicenter study of self-sealing, 3-layer, polymer dura substitute. Abstract presented at the 69<sup>th</sup> Meeting of the American Association of Neurological Surgeons (AANS). Toronto, Ontario, Canada. April 21-26, 2001.
- Yamagata S, Goto K, Oda Y, Kikuchi H. Clinical experience with expanded polytetrafluoroethylene sheet used as an artificial dura mater. *Neurologia Medico-Chirurgica* 1993;33(8):582-585.
- Banerjee T, Meagher JN, Hunt WE. Unusual complications with use of silastic dural substitute. *American Surgeon* 1974;40(7):434-437.
- Keller JT, Ongkiko CM Jr., Saunders MC, Mayfield FH, Dunsker SB. Repair of spinal dural defects. An experimental study. *Journal of Neurosurgery* 1984;60(5):1022-1028.
- Ongkiko CM Jr., Keller JT, Mayfield FH, Dunsker SB. An unusual complication of Dura Film as a dural substitute. Report of two cases. *Journal of Neurosurgery* 1984;60(5):1076-1079.
- Stancic MF, Nozica E, Penezic L. Cerebrospinal fluid seepage through polyglactin 910 dura substitute manifested as spinal extradural collection of fluid. *Croatian Medical Journal* 2000;41(2):210-212.
- Alleyne CH Jr., Barrow DL. Immune response in hosts with cadaveric dural grafts. Report of two cases. *Journal of Neurosurgery* 1994;81(4):610-613.
- Anonymous. Leads from the MMWR. Update: Creutzfeldt-Jakob disease in a patient receiving a cadaveric dura mater graft. *Journal of the American Medical Association* 1987;258(3):309-310.
- Johnson MH, Thompson EJ. Freeze-dried cadaveric dural grafts can stimulate a damaging immune response in the host. *European Neurology* 1981;20(6):445-447.
- Lang CJ, Schuler P, Engelhardt A, Spring A, Brown P. Probable Creutzfeldt-Jakob disease after a cadaveric dural graft. *European Journal of Epidemiology* 1995;11(1):79-81.
- Centers for Disease Control and Prevention (CDC). Update: Creutzfeldt-Jakob disease in a patient receiving a cadaveric dura mater graft. *Morbidity and Mortality Weekly Report* 1987;36(21):324-325.
- Centers for Disease Control and Prevention. (CDC). Update: Creutzfeldt-Jakob disease in a second patient who received a cadaveric dura mater graft. *Morbidity and Mortality Weekly Report* 1989;38(3):37-38, 43.
- Nakamura Y, Aso E, Yanagawa H. Relative risk of Creutzfeldt-Jakob disease with cadaveric dura transplantation in Japan. *Neurology* 1999;53(1):218-220.

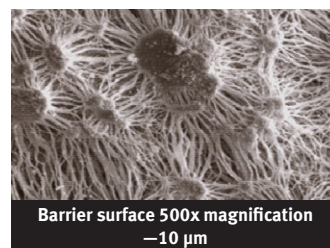
## ▶ GORE PRECLUDE® PDX Dura Substitute

- Specifically engineered smooth barrier surfaces **minimize tissue attachment on both sides**
- Traditional sutured duraplasty for **high pressure sites**
- Ideal for staged procedures and those that may require re-operations such as:
  - Decompressive craniectomies
  - Brain electrode mapping for seizure disorders
  - Recurrent brain and spinal tumors



## ▶ GORE PRECLUDE® MVP® Dura Substitute

- Specifically engineered smooth barrier surface **minimizes tissue attachment on one side**
- Proprietary ingrowth surface **facilitates tissue attachment on other side**
- Overlay and underlay application
- Ideal for procedures that will benefit from enhanced dura attachment and sealing, as well as minimal neural tissue attachment such as:
  - Transsphenoidals
  - Skull base procedures
  - Chiari malformation



### GORE PRECLUDE® PDX Dura Substitute

CATALOGUE NUMBER	NOMINAL WIDTH (CM) X LENGTH (CM)
1PDX300	2 x 10
1PDX301	5 x 6
1PDX302	6 x 10
1PDX303	10 x 12
1PDX306	2 x 5
1PDX307	4 x 4

### GORE PRECLUDE® MVP® Dura Substitute

CATALOGUE NUMBER	NOMINAL WIDTH (CM) X LENGTH (CM)
1MVP400	2 x 10
1MVP401	5 x 6
1MVP402	6 x 10
1MVP403	10 x 12
1MVP407	4 x 4

#### Ordering Information

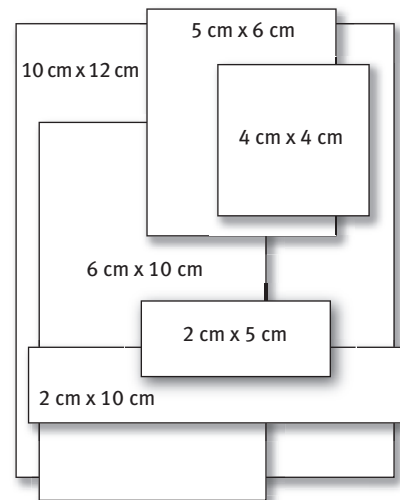
To receive further information on available sizes and custom configurations for GORE PRECLUDE® PDX Dura Substitute and GORE PRECLUDE® MVP® Dura Substitute, contact your Technical Sales Associate or a Product Specialist at 800.437.8181.

For orders and overnight delivery, call 800.528.8763.

#### Delivery Information

Standard Orders: Product is shipped the same day ordered via our overnight carrier with no freight charges to customer. Other shipping arrangements are available, but may incur additional charges.

Payment Terms: Net 30 days. All invoices reflect prices in effect at time of order fulfillment.



W. L. GORE & ASSOCIATES, INC.

Flagstaff, AZ 86004

800.437.8181

928.779.2771

[goremedical.com](http://goremedical.com)