

INSTRUCTIONS FOR USE FOR:



SMOOTHER

C R U C I A L T O O L

INSTRUCTIONS FOR USE FOR:

GORE SMOOTHER Crucial Tool**INTENDED USE**

The GORE SMOOTHER Crucial Tool is a disposable instrument that serves: 1) as a trial prosthesis for assessment of the intercondylar notch in cruciate ligament replacement procedures, 2) to smooth the intercondylar notch and drill hole edges after chamfering, 3) as an approximate measurement for proper selection of graft. The measurement is in centimeters and applies to the 7.9 mm instrument only, 4) to engage and place a graft.

CONTRAINDICATIONS: THERE ARE NO KNOWN CONTRAINDICATIONS

WARNING: DO NOT REUSE



Does not replace the need for rasping

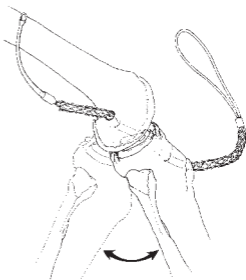
Contents sterile, unless package opened or damaged.

PRECAUTION

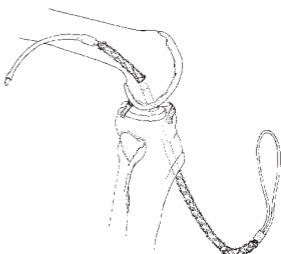
Avoid power tools or sharp objects contacting tool.

**INSTRUCTIONS FOR USE**

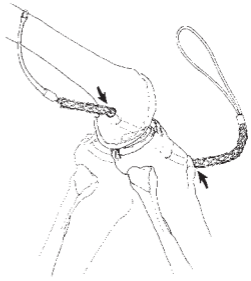
A. Place in position.



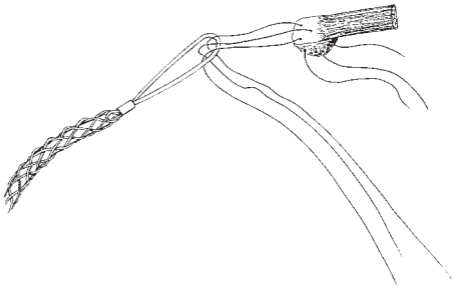
B. Flex knee: check for impingement, smooth up to 10 times every 10° of flexion.



C. Determine graft route length.




D. Engage loop end of GORE SMOOTHER Crucial Tool with leading sutures and pass through joint space.




E. Dispose in appropriate biohazard container.

DEFINITIONS

 Use By

 Attention, See Instructions for Use

 Do Not Re-Use

 Catalogue Number

 Batch Code


 STERILE


Contents sterile unless package has been opened or damaged.

 STERILE EO

Contents sterile unless enclosed package has been opened or damaged.
Sterilized by ethylene oxide.

 Do Not Resterilize

 **Rx Only** CAUTION: USA Federal Law restricts the sale, distribution, or use of this device to, by, or on the order of a physician

 Store in a cool dry place



AN0273-ML1



W. L. GORE & ASSOCIATES, INC.

Flagstaff, Arizona 86004 • USA

Order Information: Tel.: 928.526.3030 • Tel.: 800.528.8763


Technical Information: Tel.: 928.779.2771 • Tel.: 800.437.8181

For international contact and additional product information,
visit **www.goremedical.com**

ASSEMBLED IN MEXICO.

GORE, GORE SMOOTHER, and designs are trademarks of W. L. Gore & Associates.

©1997, 1998, 1999, 2005, 2009 W. L. Gore & Associates, Inc.

 Printed on recyclable paper

SEPTEMBER 2009