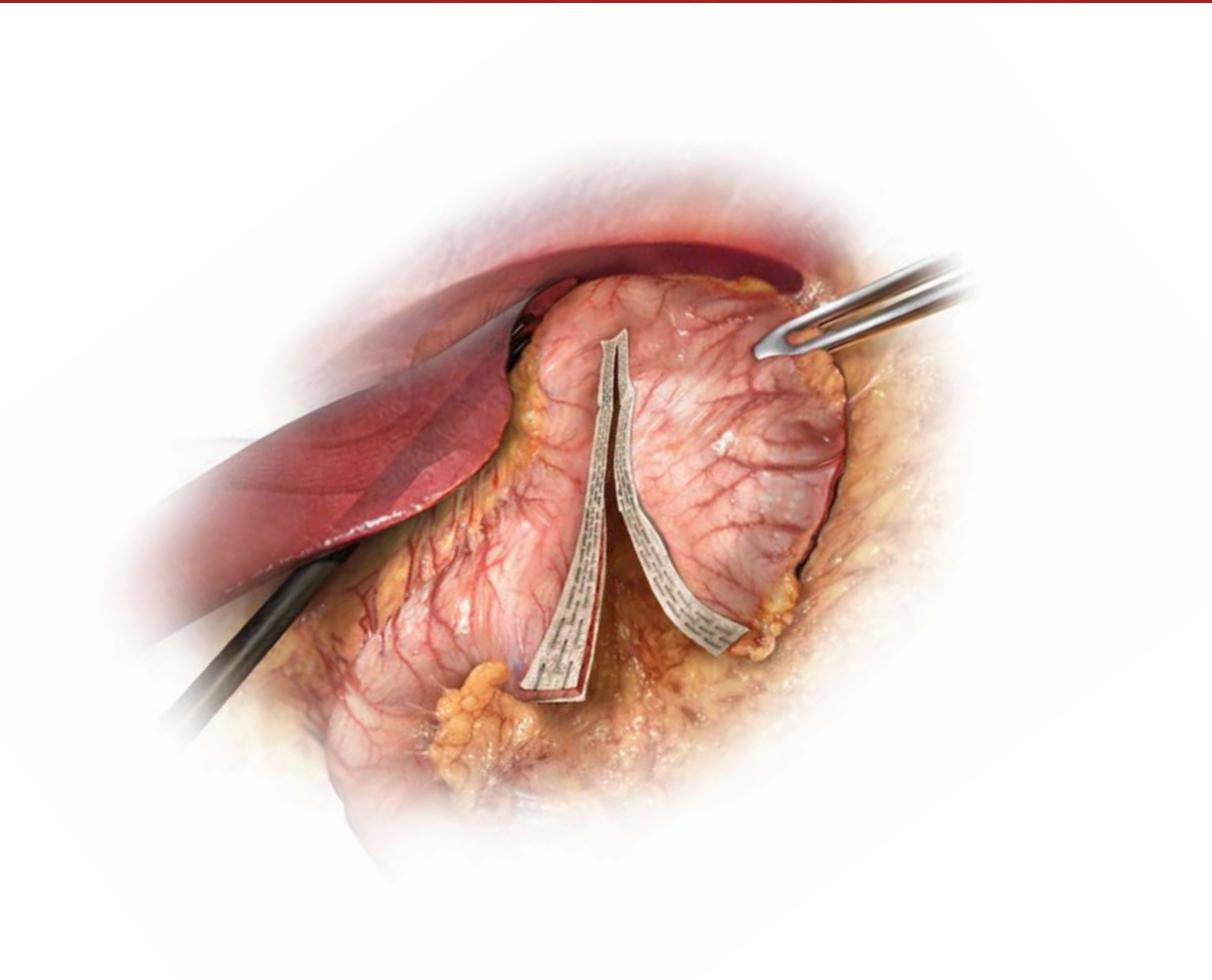


Reinforce with Confidence.



PERFORMANCE by design

**The confidence you need
right down the line.**

GORE
SEAMGUARD®
BIOABSORBABLE
STAPLE LINE REINFORCEMENT

Why use GORE® SEAMGUARD® Bioabsorbable Staple Line Reinforcement?

Because material really does matter.

Not all bioabsorbable staple line reinforcements are the same. Both the chemistry and the structure of the GORE® BIO-A® Material are important to its function.

GORE® SEAMGUARD® Bioabsorbable Staple Line Reinforcement is specifically engineered to reduce the incidence of perioperative leaks and bleeding. As a uniquely designed web of bioabsorbable synthetic polymers, it forms a 3-Dimensional matrix of open, highly interconnected pores.

Not only does this reinforcement facilitate the regeneration of favorable type I collagen, it provides added strength to the staple line during the critical healing process. Gradually and predictably, it is absorbed by the body.



**Is your current
staple line
reinforcement
slipping
when it comes
to performance?**

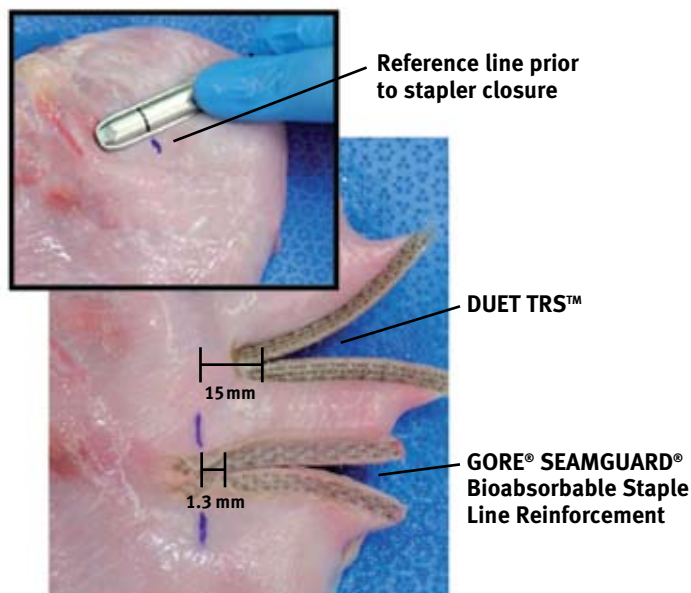
Use of COVIDIEN® DUET TRS™ Staple Line Reinforcement results in significant tissue slip and stretching during stapler firing*.

In a surgeon evaluation of staple line reinforcement:

- On average, COVIDIEN® DUET TRS™ Staple Line Reinforcement, made of a BIOSYN™ film, resulted in 15mm of tissue slip and stretching following stapler firing. 15 mm = 33% of the 45 mm staple line.

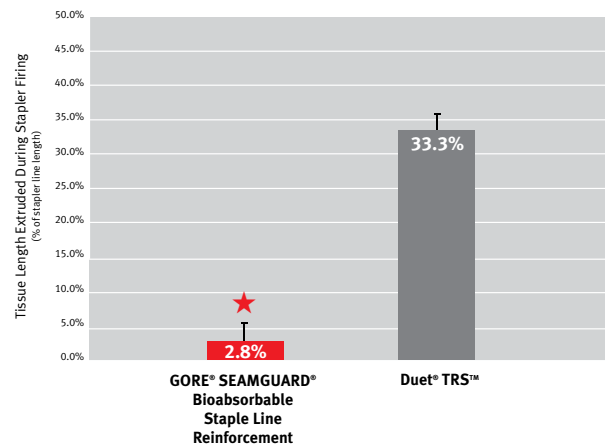
During staple firing, tissue slip and stretching may lead to:

- Difficulty grasping tissue for stapler positioning
- The need for an additional instrument to secure the tissue
- An increased number of reloads that are required for a given procedure when using COVIDIEN® DUET TRS™ Staple Line Reinforcement
- Increased cost and time



Length measured from reference line to staple line crotch after firing. ENDO GIA™ UNIVERSAL stapler with 45 - 3.5 mm straight single use loading unit (SULU)*

Tissue Slip & Stretch*



* $p=0.0004$
*n=4, ENDO GIA™ UNIVERSAL stapler with 45 - 3.5 mm straight single use loading unit (SULU)**

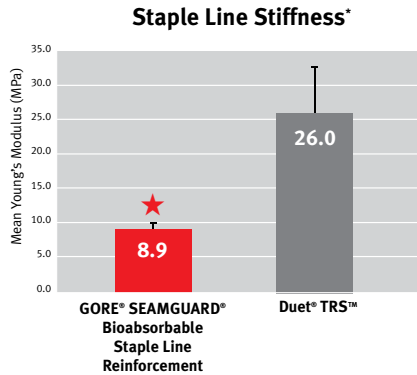
Caution: It may be integrated but not easy to use.

Even the Instructions For Use (IFU) for COVIDIEN® DUET TRS™ Staple Line Reinforcement state:

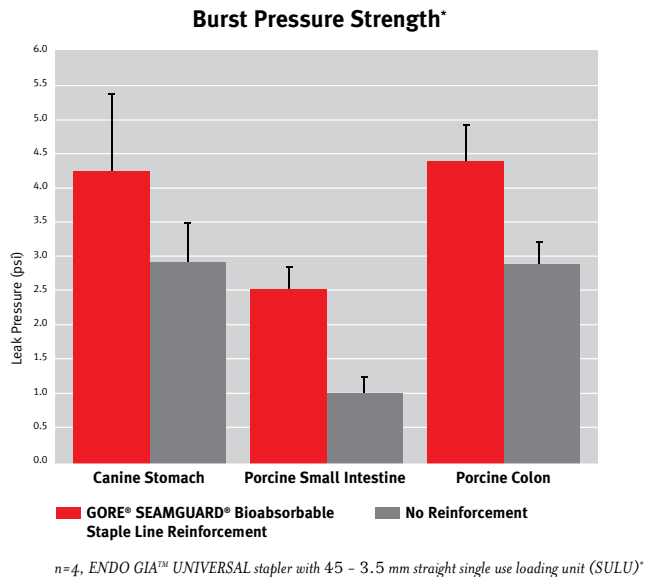
- Caution: Due to the atraumatic closure of the Duet TRS™ SULU the tissue may extrude distally and laterally as you clamp and/or fire. To minimize this, the use of an atraumatic grasper is recommended to place and secure the tissue within the jaws.
- Caution: In the event of an incomplete firing of the Duet TRS™ SULU the BIOSYN™ anchoring suture that secures the reinforcement material at the distal end of each anvil and cartridge may not be cut and may prevent the jaws from opening fully. The remaining intact Duet TRS™ SULU with reinforcement material will need to be removed by gentle traction and/or excised with scissors.

GORE® SEAMGUARD® Bioabsorbable Staple Line Reinforcement: Strong, yet thin.

GORE® SEAMGUARD® Bioabsorbable Staple Line Reinforcement provides the ideal balance between burst pressure strength and the amount of material implanted. In animal models, GORE® SEAMGUARD® Bioabsorbable Staple Line Reinforcement increased the leak pressure by an average of 82%*.



* $p = 0.001$
*n=4, ENDO GIA™ UNIVERSAL stapler with 4.5 - 3.5 mm straight single use loading unit (SULU)**



Ideal for surgical procedures: Naturally conformable

GORE® SEAMGUARD® Bioabsorbable Staple Line Reinforcement is soft and conformable, making it ideal for surgical procedures in which soft tissue transection or resection with staple line reinforcement is needed.

By comparison, COVIDIEN® DUET TRS™ Staple Line Reinforcement is made of a stiff, solid film, which results in a more rigid staple line.

Proven Performance: Reinforcements ready as soon as you fire.

There are good reasons that GORE® SEAMGUARD® Bioabsorbable Staple Line Reinforcement is the only proven bioabsorbable staple line reinforcement on the market. Take a look at these gripping results:



- More than 40 clinical papers documenting its successful use
- Backed by more than 15 years of bioabsorbable material technology research and clinical use
- Used in more than 500,000 implants worldwide

Go with the proven industry leader: GORE® SEAMGUARD® Bioabsorbable Staple Line Reinforcement. It's strong. It's conformable. Best of all, it doesn't slip during firing.

Proof, once again, that material really does matter.



W. L. GORE & ASSOCIATES, INC.
Flagstaff, AZ 86004

+65.67332882 (Asia Pacific)
00800.6334.4673 (Europe)
800.437.8181 (United States)
928.779.2771 (United States)

goremedical.com

Products listed may not be available in all markets.

*Data on file. Data shown as mean plus standard deviation.

GORE®, BIO-A®, PERFORMANCE BY DESIGN, SEAMGUARD®, and designs are trademarks of W. L. Gore & Associates.

CCOVIDIEN, DUET TRS, and BIOSYN are trademarks of Covidien AG.

ENDO GIA is a trademark of United States Surgical Corporation.

©2010 W. L. Gore & Associates, Inc. AN3062-EN1 MARCH 2010