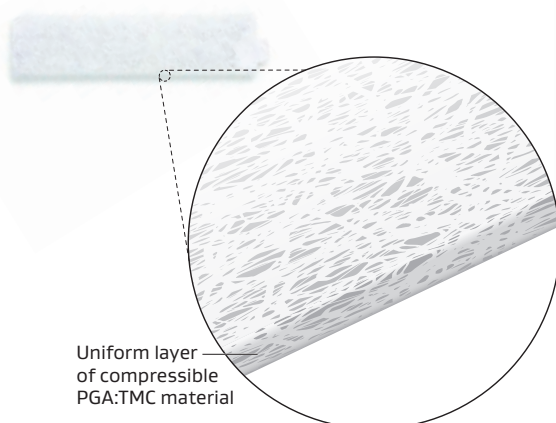


GORE® SEAMGUARD®

Bioabsorbable Staple
Line Reinforcement

See the material difference

There are many properties of staple line reinforcement (SLR) products to understand and evaluate when making a product choice. See the comparison below.



GORE® SEAMGUARD® Bioabsorbable Staple Line Reinforcement

Material

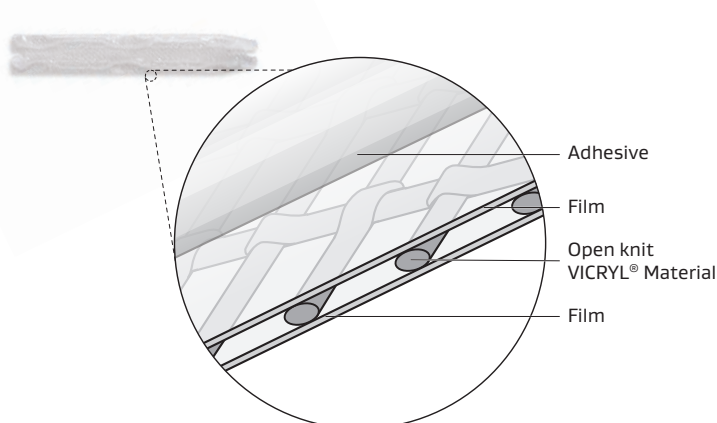
Composed of an intricate 3D matrix of 67% polyglycolic acid (PGA) and 33% trimethylene carbonate (TMC).

Thickness

Total device thickness is 0.4 mm¹

Absorption

PGA:TMC material absorbs slowly over 6–7 months.² Slower degradation creates minimal inflammatory response, especially during early post-op time points which is the critical healing period.³



ETHICON ECHELON ENDOPATH® Staple Line Reinforcement

Material

Two layers of polydioxanone film surround a layer of VICRYL® Material (copolymer of 90% glycolide and 10% L-lactide). The adhesive is composed of a mixture of water soluble alkylene oxide copolymers.

Thickness

Total device thickness is 0.4 mm⁴

Absorption

Absorbs over 4 months, which is 60% faster than GORE® SEAMGUARD® Bioabsorbable Staple Line Reinforcement.^{1,4} Other comparable SLR's with similar rates of absorption have demonstrated a higher inflammatory response during the critical healing period.³

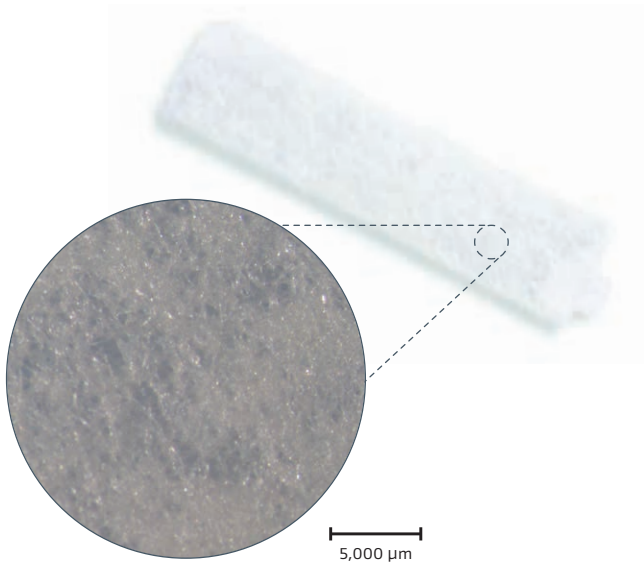
ETHICON and ECHELON ENDOPATH are trademarks of Ethicon, Inc., a Johnson & Johnson Company.
VICRYL is a trademark of Johnson & Johnson Company.

Together, improving life



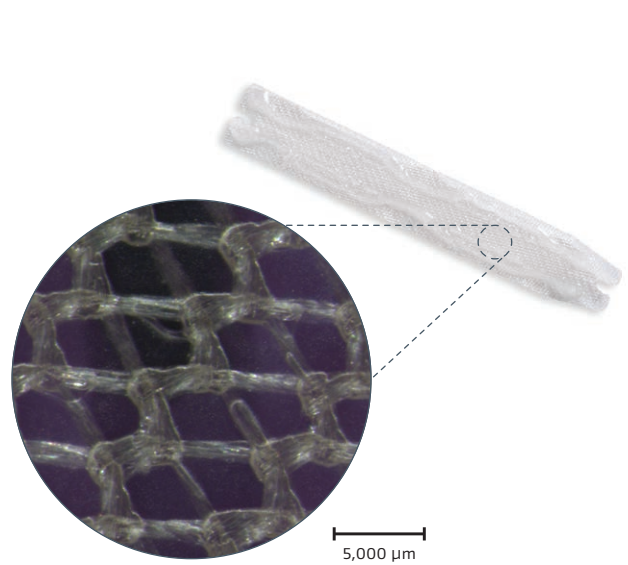
See the material difference

GORE® SEAMGUARD® Bioabsorbable Staple Line Reinforcement

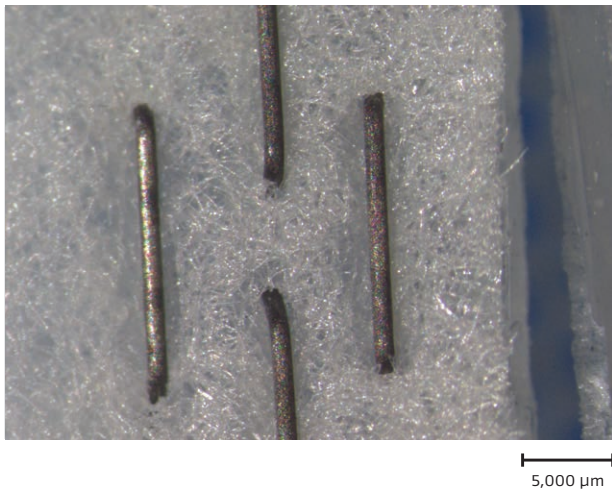


No clear or obvious voids or spaces

ETHICON ECHELON ENDOPATH® Staple Line Reinforcement

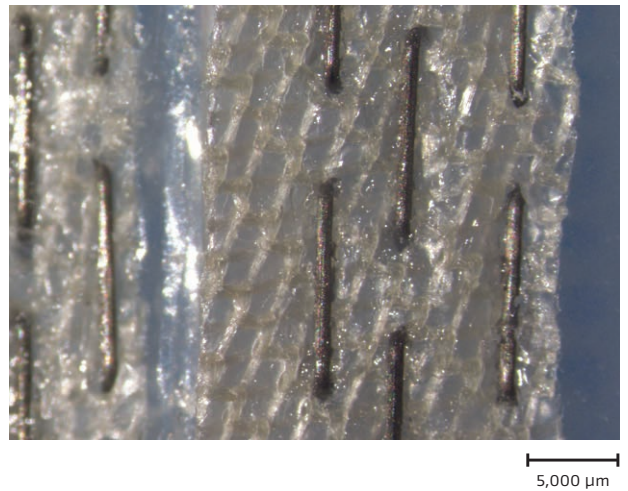


Clear voids and spaces



100%

Coverage of the staple line
with buttress material



~60%

Only partial coverage of the staple line
with VICRYL® Material⁵

See the material difference

GORE® SEAMGUARD® Bioabsorbable Staple Line Reinforcement is:

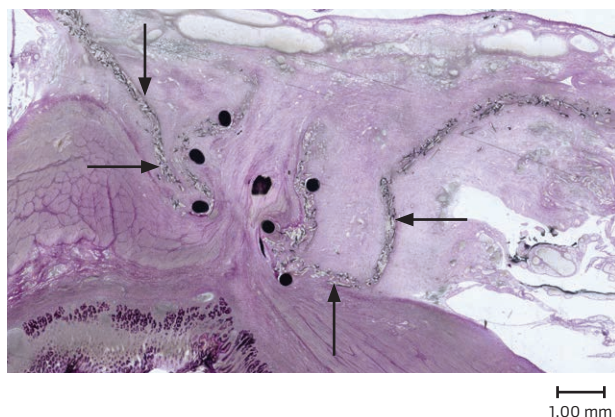
- This results in a staple line reinforcement that more closely aligns with the anatomical contours of the staple line.⁵
- Uniform contact of the material with staples and tissue evenly distributes pressure to reduce bleeding, supported by randomized prospective data.^{6,7}

13.9×
less stiff

versus ETHICON ECHELON
ENDOPATH® Staple Line
Reinforcement*,⁵

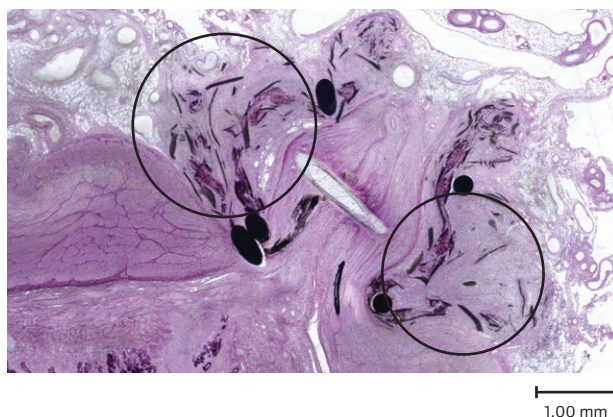
Hematoxylin and eosin stain of porcine tissue

GORE® SEAMGUARD® Bioabsorbable Staple Line Reinforcement



Physical form of the material maintained 14 days after the procedure. Arrows are pointing to the continuous staple line reinforcement.

ETHICON ECHELON ENDOPATH® Staple Line Reinforcement



A loss of physical form is evident 14 days after the procedure. Circled are dispersed components of the staple line reinforcement.

In a porcine study at 14 and 21 days after procedure:

GORE® SEAMGUARD® Bioabsorbable Staple Line Reinforcement remains **largely in place**, while components of the ETHICON ECHELON ENDOPATH® Staple Line Reinforcement have dispersed.⁸

* Stiffness properties have been characterized through Young's Modulus.

ETHICON and ECHELON ENDOPATH are trademarks of Ethicon, Inc., a Johnson & Johnson Company.
VICRYL is a trademark of Johnson & Johnson Company.

See the packaging difference

GORE® SEAMGUARD® Bioabsorbable
Staple Line Reinforcement



194%

less sterile waste

with GORE® SEAMGUARD® Bioabsorbable
Staple Line Reinforcement

versus ETHICON ECHELON ENDOPATH®
Staple Line Reinforcement⁵

ETHICON ECHELON ENDOPATH®
Staple Line Reinforcement



51%

more storage space required

for ETHICON ECHELON ENDOPATH®
Staple Line Reinforcement

versus GORE® SEAMGUARD® Bioabsorbable
Staple Line Reinforcement⁵

Staple line reinforcement package sizes for multipack boxes⁵

	GORE® SEAMGUARD® Bioabsorbable Staple Line Reinforcement 12-Pack	ETHICON ECHELON ENDOPATH® Staple Line Reinforcement 6-pack
Volume (in ³)	210.4	277.6
Volume per device (in ³)	17.5	46.3

Summary of key differences

	GORE® SEAMGUARD® Bioabsorbable Staple Line Reinforcement	ETHICON ECHELON ENDOPATH® Staple Line Reinforcement
Staple line coverage	100% staple line coverage.	~60% coverage of the staple line with VICRYL® Material. ⁵
Material properties	GORE® SEAMGUARD® Bioabsorbable Staple Line Reinforcement is 13.9× less stiff versus ETHICON ECHELON ENDOPATH® Staple Line Reinforcement allowing the reinforcement to more closely align with the anatomical contours of the staple line. ⁵	
Anastomotic applications	Circular configurations of GORE® SEAMGUARD® Bioabsorbable Staple Line Reinforcement are specifically intended for anastomotic use. Clinical data supports the use in anastomotic applications and demonstrates no interference with healing of the staple line. ⁹	<i>Instructions for Use</i> warns that based on limited preclinical and clinical data, the “material may interfere with normal anastomotic healing and desired apposition of tissues” when placed between opposing sides of an anastomosis. ⁴
Robotic stapling configurations	Compatibility with the INTUITIVE® SUREFORM 60 Stapler CONFIRMED by Gore and Intuitive Surgical, Inc.	Confirmation of compatibility with the INTUITIVE® SUREFORM 60 Stapler by Intuitive Surgical, Inc. is unknown.
Tissue response	Material largely retained its morphology after 14 and 21 days in a porcine model. ⁸	Material visibly dispersed after 14 and 21 days in a porcine model. ⁸
Sterile waste	194% less sterile waste with GORE® SEAMGUARD® Bioabsorbable Staple Line Reinforcement versus ETHICON ECHELON ENDOPATH® Staple Line Reinforcement. ⁵	

References

1. GORE® SEAMGUARD® Bioabsorbable Staple Line Reinforcement. Configured for Endoscopic Surgical Staplers. [Instructions for Use]. Flagstaff, AZ: W. L. Gore & Associates, Inc; 2022. MD189633.
2. Katz AR, Mukherjee DP, Kaganov AL, Gordon S. A new synthetic monofilament absorbable suture made from polytrimethylene carbonate. *Surgery, Gynecology & Obstetrics* 1985;161(3):213-222.
3. Khaitan L, Yoo J. *Comparison Between Staple Line Reinforcement Materials: GORE® SEAMGUARD® Bioabsorbable Staple Line Reinforcement and MEDTRONIC ENDO GIA Reinforced Reload with TRI-STAPLE Technology*. Flagstaff, AZ: W. L. Gore & Associates, Inc; 2017. [Case series]. AV1650-EN1.
4. Echelon Endopath™ Endopath Staple Line Reinforcement [Instructions for Use]. Guaynabo, PR: Ethicon Endo-Surgery, LLC; 2022. A001056. Rev B. 2022-10-31.
5. Berkery K. *Product Characteristics Including: Young's Modulus, Void Space, Weight Analysis, and Volume Analysis of ECHELON'S ENDOPATH Staple Line Reinforcement compared to GORE SEAMGUARD Bioabsorbable Staple Line Reinforcement*. Flagstaff, AZ: W.L. Gore & Associates Inc; 2022. [Work plan]. WP112798.
6. Nguyen NT, Longoria M, Welbourne S, Sabio A, Wilson SE. Glycolide copolymer staple-line reinforcement reduces staple site bleeding during laparoscopic gastric bypass. A prospective randomized trial. *Archives of Surgery* 2005;140(8):773-778.
7. Miller KA, Pump A. Use of bioabsorbable staple reinforcement material in gastric bypass: a prospective randomized clinical trial. *Surgery for Obesity & Related Diseases* 2007;3(4):417-422.
8. McLain K. *A comparison of the GORE® SEAMGUARD® Bioabsorbable Staple Line Reinforcement to the Ethicon ECHELON ENDOPATH™ Staple Line Reinforcement in the porcine model at 3, 7, 14, and 21 days*. Flagstaff, AZ: W.L. Gore & Associates Inc; 2022. [Final study report]. Protocol number 2663SC.
9. GORE® SEAMGUARD® Bioabsorbable Staple Line Reinforcement Configured for Circular Surgical Staplers [Instructions for Use]. Flagstaff, AZ: W. L. Gore & Associates, Inc; 2022. MD189050.

 Consult Instructions
for Use
eifu.goremedical.com

Refer to *Instructions for Use* at eifu.goremedical.com for a complete description of all applicable indications, warnings, precautions and contraindications for the markets where this product is available. [®] Only

Products listed may not be available in all markets.

ETHICON and ECHELON ENDOPATH are trademarks of Ethicon, Inc., a Johnson & Johnson Company.
INTUITIVE and SUREFORM are trademarks of Intuitive Surgical, Inc.
VICRYL is a trademark of Johnson & Johnson Company.

GORE, *Together, improving life*, SEAMGUARD and designs are trademarks of W. L. Gore & Associates.
© 2023 W. L. Gore & Associates, Inc. 231186364-EN NOVEMBER 2023

W. L. Gore & Associates, Inc.
Flagstaff, AZ 86004

Asia Pacific +65 67332882 Australia/New Zealand 1800 680 424 Europe 00800 6334 4673
United States 800 437 8181 928 779 2771 goremedical.com

