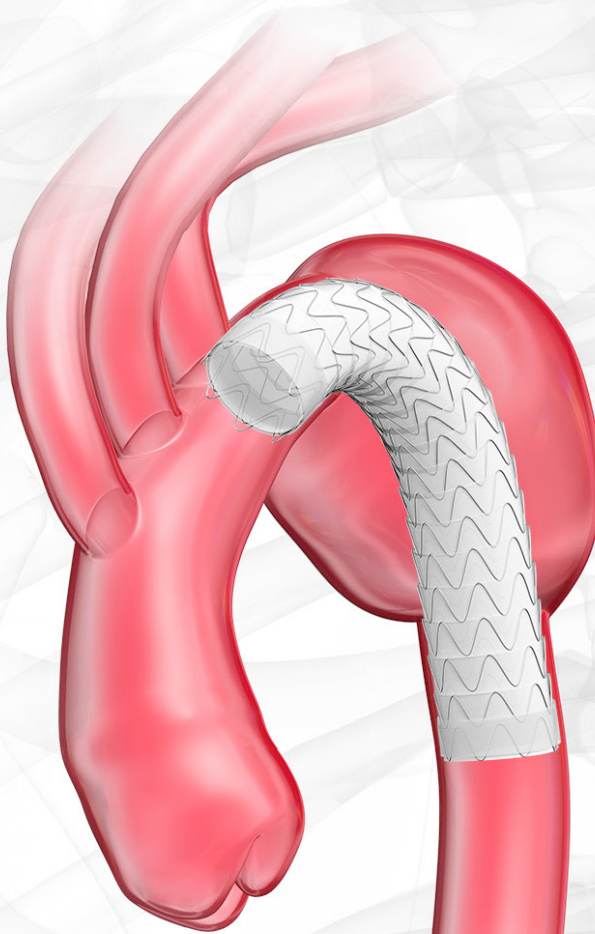


**GORE® TAG®**  
Conformable Thoracic  
Stent Graft



# U.S. IDE Clinical Trials

Five-year data across etiologies

GET STARTED



*Together, improving life*



## Longterm results you can trust

U.S. IDE Clinical Trials: Five year data across ALL etiologies

# ZERO

Migrations\*  
Fractures  
Compressions

Type III endoleaks  
Erosions

# 100%

Procedural  
survival

↓↓ Low  
rates of

Endoleaks  
requiring  
reintervention

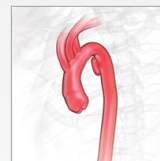
Device-related  
reinterventions



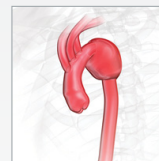
View trials



Acute Complicated  
Type B Dissection »



Traumatic Aortic  
Transection »

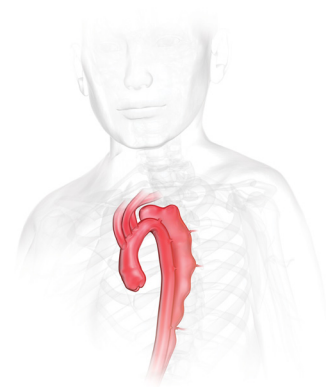


Thoracic Aortic  
Aneurysm »

\* Migrations are reported as those requiring reintervention.

# Acute Complicated Type B Dissection

Long-term outcomes in a prospective multicenter trial



U.S. IDE Clinical Trial



50

patients  
enrolled

100%

procedural  
survival

## 5-year data

91%

of patients exhibited  
an increase in true  
lumen diameter\*

87%

complete  
thrombosis  
observed

96%

of patients did not  
experience late deaths  
attributable to aortic  
pathology after 30 days†

ZERO

Migrations‡

Type III endoleaks

Erosions

Compressions

Fractures

Conversions to open  
surgical repair

\* At five years.

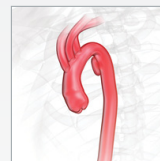
† 8% 30-day mortality rate.

‡ Migrations are reported as those  
requiring reintervention.

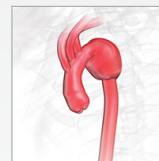
View trials



Acute Complicated  
Type B Dissection »



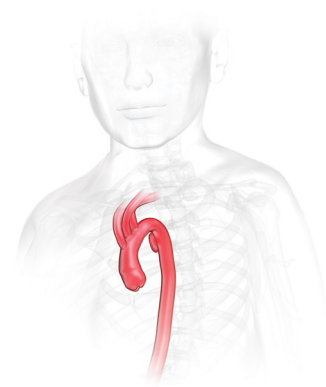
Traumatic Aortic  
Transection »



Thoracic Aortic  
Aneurysm »

# Traumatic Aortic Transection

Long-term outcomes in a prospective multicenter trial



U.S. IDE Clinical Trial



**101**

patients  
enrolled

**100%**

procedural  
survival

## 5-year data

**100%**

Freedom from  
aortic-related  
mortality

**99%**

did not experience  
a device/procedure-  
related stroke\*

**95%**

Freedom from  
all-cause mortality  
at 30 days

**89%**

Freedom from  
all-cause mortality  
at 5 years

**ZERO**

Reinterventions

Endoleaks<sup>†</sup>

Ruptures<sup>‡</sup>

Fractures

Lumen obstructions

Thrombus related  
events

Conversions to open  
surgical repair

Compressions

Migrations<sup>§</sup>

Erosions



As published in:  
*The Annals of Thoracic Surgery* (2021).

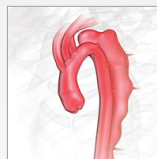
\* n = 1 post procedural, ischemic, stroke.

† No serious endoleaks reported. Two minor  
endoleaks were reported which resolved  
without reintervention.

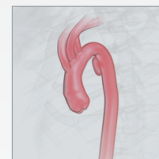
‡ Post procedure.

§ Requiring reinterventions.

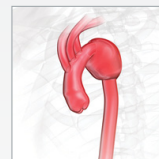
## View trials



Acute Complicated  
Type B Dissection »



Traumatic Aortic  
Transection »

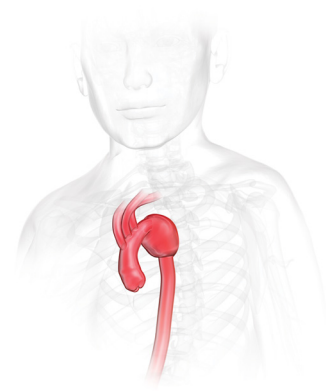


Thoracic Aortic  
Aneurysm »



# Thoracic Aortic Aneurysm

Long-term outcomes in a prospective multicenter trial



U.S. IDE Clinical Trial



**66**  
patients  
enrolled

**100%**  
procedural  
survival

## 5-year data

**88%**

Freedom from  
device-related  
reinterventions

**82%**

Stable aneurysm  
sac diameters

**93%**

Freedom from  
aneurysm-related  
mortality

**ZERO**

Fractures  
Compressions  
Migrations\*  
Type III endoleaks

Conversions to open  
surgical repair  
Erosions

 **Low  
rates of**

Reintervention<sup>†</sup>  
Proximal leaks<sup>‡</sup>  
Rupture<sup>§</sup>



As published in:  
*Journal of Vascular Surgery* (2021).

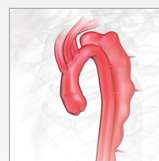
\* With clinical sequelae resulting in reinterventions through five-years.

† Device related reinterventions: 7.6% (n=5)  
four of the five were treatments for endoleaks  
and one for a distal thoracic pseudoaneurysm.

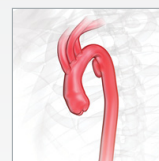
‡ Type Ia was rare n = 1.

§ 1.5% n = 1.

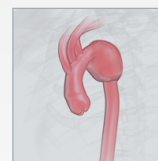
## View trials



Acute Complicated  
Type B Dissection »



Traumatic Aortic  
Transection »



Thoracic Aortic  
Aneurysm »

---

Contact a Gore representative to learn more.  
**tevar.tv**

---

## References

OP869 Farber MA, Krishnasastry KV, Desai N, Starnes BW, Matsumura JS, Tohill BC; TAG 08-02 Clinical Trial Investigators. Five-year outcomes with Conformable GORE® TAG® endoprosthesis used in traumatic aortic transections. *Annals of Thoracic Surgery*. In press.  
<https://www.sciencedirect.com/science/article/pii/S0003497521010134>

OP871 Jordan WD, Desai N, Letter AJ, Matsumura JS. Long-term outcomes of the CTAG thoracic endograft in a prospective multicenter trial. *Journal of Vascular Surgery* 2021;74(5):1491-1498.  
<https://www.sciencedirect.com/science/article/pii/S0741521421007485>

W. L. Gore & Associates. Evaluation of the GORE Conformable TAG® Thoracic Endoprosthesis for Treatment of Acute Complicated Type B Aortic Dissection. Bethesda, MD: National Library of Medicine; 2009. NLM Identifier: NCT00908388. Published May 25, 2009. Updated October 27, 2017. Accessed March 1, 2022. Available from: <https://clinicaltrials.gov/ct2/show/NCT00908388>

 Consult Instructions  
for Use  
[eifu.goremedical.com](http://eifu.goremedical.com)

**INDICATIONS FOR USE IN THE U.S.:** The GORE® TAG® Conformable Thoracic Stent Graft is intended for endovascular repair of all lesions of the descending thoracic aorta, including: Isolated lesions in patients who have appropriate anatomy, including: Adequate iliac/femoral access; Aortic inner diameter in the range of 16-42 mm;  $\geq 20$  mm non-aneurysmal aorta proximal and distal to the lesion. Type B dissections in patients who have appropriate anatomy, including: Adequate iliac/femoral access;  $\geq 20$  mm landing zone proximal to the primary entry tear; proximal extent of the landing zone must not be dissected; Diameter at proximal extent of proximal landing zone in the range of 16-42 mm. **CONTRAINDICATIONS:** The GORE® TAG® Conformable Thoracic Stent Graft is contraindicated in: Patients with known sensitivities or allergies to the device materials (Table 1); Patients who have a condition that threatens to infect the graft. Refer to *Instructions for Use* at [eifu.goremedical.com](http://eifu.goremedical.com) for a complete description of all applicable indications, warnings, precautions and contraindications for the markets where this product is available. **Rx Only**

**INDICATIONS FOR USE UNDER CE MARK:** The GORE® TAG® Conformable Thoracic Stent Graft is indicated for endovascular repair of the descending thoracic aorta. **CONTRAINDICATIONS:** Patients with known sensitivities or allergies to the device materials; patients with a systemic infection who may be at increased risk of endovascular graft infection. Refer to *Instructions for Use* at [eifu.goremedical.com](http://eifu.goremedical.com) for a complete description of all applicable indications, warnings, precautions and contraindications for the markets where this product is available. **Rx Only**

Products listed may not be available in all markets.

GORE, *Together, improving life*, TAG and designs are trademarks of W. L. Gore & Associates.  
© 2022 W. L. Gore & Associates, Inc. 21329751-EN MARCH 2022

---

W. L. Gore & Associates, Inc.  
[goremedical.com](http://goremedical.com)

Asia Pacific +65.67332882 Australia/New Zealand 1800 680 424 Europe 00800 6334 4673  
United States Flagstaff, AZ 86004 800 437 8181 928 779 2771

