

GORE® VIABAHN®

Endoprosthesis
with Heparin Bioactive Surface*

TREATMENT OF EXTERNAL ILIAC ARTERY STENOSIS USING LOWER PROFILE 9 MM GORE® VIABAHN® ENDOPROSTHESIS

Case submitted by Charles Briggs, M.D.

*As used by Gore, Heparin Bioactive Surface refers to Gore's proprietary CBAS Heparin Surface.

Together, improving life



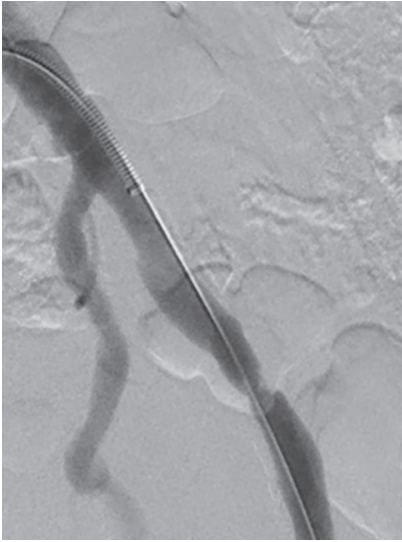


Image 1

Angiogram with sheath in left common iliac artery demonstrates severe stenosis within mid external iliac artery

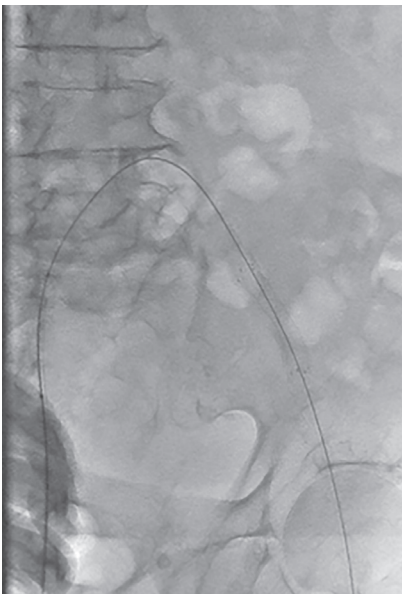


Image 2

Up-and-over the aortic bifurcation, the GORE® VIABAHN® Endoprosthesis with Heparin Bioactive Surface was placed within the left external iliac artery, prior to post-dilation

Challenge

70-year-old male with painful dry gangrenous left second toe, present for two months. No evidence of cellulitis or wet gangrene, however, the patient was treated with antibiotics for two weeks prior to the procedure.

- Associated ischemic rest pain in the toe that improved with dependent positioning confirmed by duplex ultrasound with monophasic waveforms throughout the lower extremity (Ankle-Brachial-Index (ABI) 0.87 and Toe-Brachial-Index (TBI) 0.0). No other symptoms of rest pain or claudication in the foot or leg.
- Relevant patient history:
 - Diabetes mellitus type II, hypertension, chronic kidney disease type III, hypocalcemia.
 - In remission from seminoma after a left radical orchiectomy and left pelvic primary radiotherapy, which the physician suspected may have resulted in embolizing iliac artery lesion.

Procedure

The procedure plan was to minimize contrast dye by using intravascular ultrasonography (IVUS) to evaluate for left iliofemoral embolizing and/or flow-limiting lesions and perform an angiogram of the popliteal-tibial runoff to assess healing potential of toe and need for distal revascularization.

- Right femoral access was gained with a 6 Fr sheath and then an ANGIODYNAMICS® OMNI Flush Angiographic Catheter and TERUMO® RADIFOCUS® GLIDEWIRE® ADVANTAGE Guidewire were advanced up-and-over the aortic bifurcation.
- The wire and straight-tip catheter were advanced into the left popliteal artery and a runoff angiogram was performed with no treatable tibial arterial lesion identified.
- The TERUMO® RADIFOCUS® GLIDEWIRE® ADVANTAGE Guidewire was exchanged for a .014" ABBOTT® HI-TORQUE SPARTACORE Guidewire into the left popliteal artery. A .014" PHILIPS EAGLE EYE PLATINUM RX Digital IVUS Catheter was advanced distally over the wire, where severe stenosis within the left external iliac artery and left popliteal artery were identified.
- The wire was exchanged back to a TERUMO® RADIFOCUS® GLIDEWIRE® ADVANTAGE Guidewire and a 6 Fr TERUMO® Sheath was advanced over the wire to left common femoral artery (CFA).
- The popliteal artery was ballooned with a 5 x 120 mm BOSTON SCIENTIFIC MUSTANG Balloon Dilatation Catheter, followed by a 6 x 150 mm MEDTRONIC IN.PACT Admiral DCB. Completion angiogram demonstrated satisfactory resolution of stenosis.
- The up-and-over sheath was then exchanged for an 8 Fr TERUMO® Sheath.

- The sheath was then pulled back into the left common iliac artery (CIA), and IVUS identified stenosis in the external iliac artery (EIA).
- Diameter measurements were taken at the lesion, also proximal and distal to the lesion for stent sizing (vessel measured 8.5 mm).
- A 9 mm x 5 cm GORE® VIABAHN® Endoprosthesis with Heparin Bioactive Surface was selected and deployed across the lesion.
- Post-dilation was performed with a BOSTON SCIENTIFIC MUSTANG Balloon Dilatation Catheter.

Result

- Completion IVUS and angiogram showed good expansion of the VIABAHN® Device without residual stenosis.
- Patient was discharged same day on acetylsalicylic acid and clopidogrel.
- Follow-up in clinic in thirty days revealed healing of the left second toe.
 - Plethysmography revealed left ABI increase to 0.98 with associated increase in TBI to 0.50.
 - Arterial duplex ultrasonography showed the treated area to have triphasic flow in the external iliac artery and infrainguinal arterial tree.

Case Takeaways

- For this patient, extensive IVUS was helpful to identify the lesion, normal lumen proximal and distal to the lesion, and precise measurements. IVUS was also instrumental in accurately measuring the vessel diameter and selecting the appropriate VIABAHN® Device diameter per the sizing table in the IFU.
- The ability to deliver the VIABAHN® Device through an 8 Fr sheath greatly improves the ability of the interventionalist to safely treat larger caliber vessels with a lower likelihood of access site complications.
- The use of covered stents protects from possible extravasation in highly calcific vessels and may perform better in more complex anatomy.¹ Since there is a fair bit of tortuosity within the mid- to distal- external iliac artery, the flexibility of the VIABAHN® Device may be more suitable at managing this anatomy.

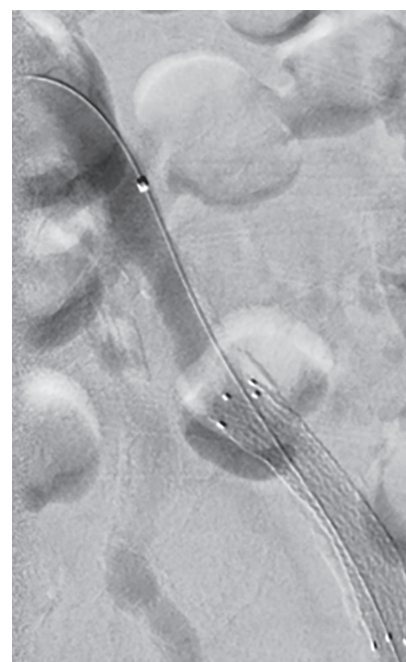


Image 3

Resolution of left EIA stenosis using a 9 mm x 5 cm GORE® VIABAHN® Endoprosthesis with Heparin Bioactive Surface

References

1. Lammer J, Dake MD, Bley J, *et al.* Peripheral arterial obstruction: prospective study of treatment with a transluminally placed self-expanding stent graft. *Radiology* 2000;217(1):95-104.

 Consult Instructions
for Use
eifu.goremedical.com

INDICATIONS FOR USE IN THE U.S.: The GORE® VIABAHN® Endoprosthesis is indicated for improving blood flow in patients with symptomatic peripheral arterial disease in superficial femoral artery de novo and restenotic lesions up to 270 mm in length with reference vessel diameters ranging from 4.0 – 7.5 mm. The GORE® VIABAHN® Endoprosthesis is indicated for improving blood flow in patients with symptomatic peripheral arterial disease in superficial femoral artery in-stent restenotic lesions up to 270 mm in length with reference vessel diameters ranging from 4.0 – 6.5 mm. The GORE® VIABAHN® Endoprosthesis is indicated for improving blood flow in patients with symptomatic peripheral arterial disease in iliac artery lesions up to 80 mm in length with reference vessel diameters ranging from 4.0 – 12 mm. The GORE® VIABAHN® Endoprosthesis is also indicated for the treatment of stenosis or thrombotic occlusion at the venous anastomosis of synthetic arteriovenous (AV) access grafts.

CONTRAINDICATIONS: The GORE® VIABAHN® Endoprosthesis with Heparin Bioactive Surface is contraindicated for non-compliant lesions where full expansion of an angioplasty balloon catheter was not achieved during pre-dilatation, or where lesions cannot be dilated sufficiently to allow passage of the delivery system. Do not use the GORE® VIABAHN® Endoprosthesis with Heparin Bioactive Surface in patients with known hypersensitivity to heparin, including those patients who have had a previous incident of Heparin-Induced Thrombocytopenia (HIT) type II. Refer to *Instructions for Use* at eifu.goremedical.com for a complete description of all applicable indications, warnings, precautions and contraindications for the markets where this product is available. ^{Rx}Only

This content is for informational purposes only, is not advice or a guarantee of outcome. It is not a substitute for professional medical advice, diagnosis or treatment. Individual results and/or treatment may vary based upon the circumstances, the patient's specific situation, and the healthcare provider's medical judgment.

Products listed may not be available in all markets.

ABBOTT and HI-TORQUE SPARTACORE are trademarks of Abbott Laboratories. ANGIODYNAMICS® and OMNI are trademarks of AngioDynamics, Inc. BOSTON SCIENTIFIC and MUSTANG are trademarks of Boston Scientific Corporation. MEDTRONIC and IN.PACT are trademarks of Medtronic, Inc. QUICK-CROSS is a trademark of Spectranetics Corp. TERUMO, RADIFOCUS and GLIDEWIRE are trademarks of Terumo Medical Corporation. CBAS is a trademark of Carmeda AB, a wholly owned subsidiary of W. L. Gore & Associates, Inc. GORE, *Together, improving life*, VIABAHN and designs are trademarks of W. L. Gore & Associates. © 2021 W. L. Gore & Associates, Inc. 21173803-EN JUNE 2021

W. L. Gore & Associates, Inc.
goremedical.com

Asia Pacific +65 67332882 Australia/New Zealand 1800 680 424 Europe 00800 6334 4673
United States Flagstaff, AZ 86004 800 437 8181 928 779 2771

