

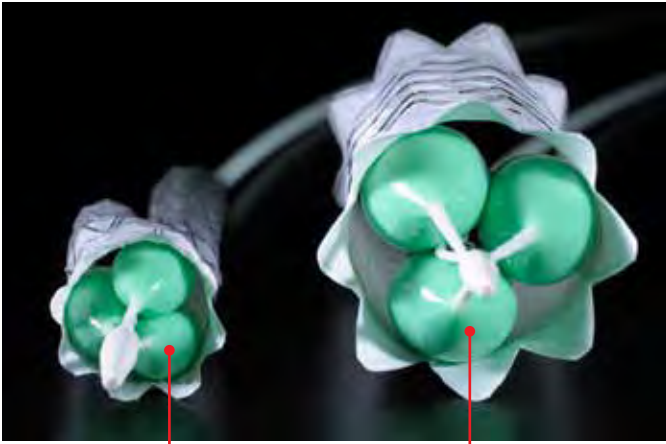


PERFORMANCE by design

- **Allows Continuous Flow Around Lobes While Inflated**
 - Allows ~80% of flow for distal perfusion
 - Decreased hemodynamic pressure on inflated balloons
- **Compliant Polyurethane Balloons**
- **Rapid Inflation and Deflation**
- **Uniform and Simultaneous Lobe Inflation**
- **Available in Two 18 Fr Introducer Sheath Compatible Sizes**
 - Small (BCM1634) for 16–34 mm vessel diameters
 - Large (BCL2645) for 26–42 mm vessel diameters

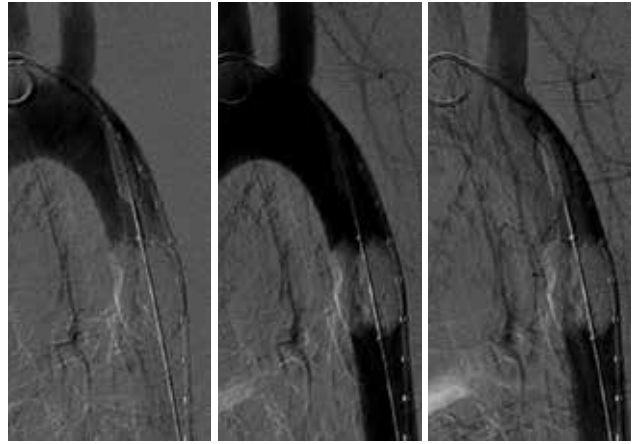


Unique Tri-Lobe Design Allows Continuous Blood Flow



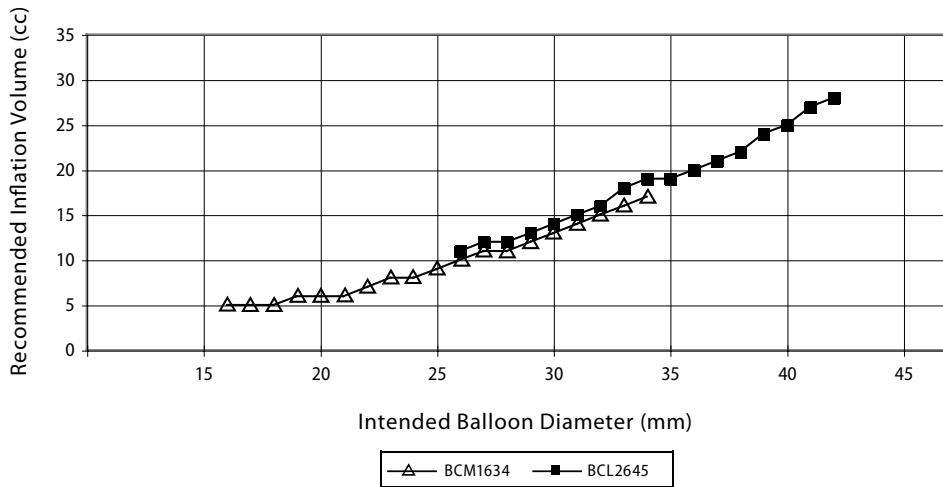
Small Balloon Catheter (BCM1634) in GORE EXCLUDER® AAA Endoprosthesis

Large Balloon Catheter (BCL2645) in GORE TAG® Thoracic Endoprosthesis



Flow Demo in Porcine Model

GORE Tri-Lobe Balloon Catheter Inflation Volume Guide



Products listed may not be available in all markets.

GORE, EXCLUDER®, TAG®, and designs are trademarks of W. L. Gore & Associates.
© 2009, 2014 W. L. Gore & Associates, Inc. AN0634-EN3 SEPTEMBER 2014



W. L. GORE & ASSOCIATES, INC.
Flagstaff, AZ 86004

+65.67332882 (Asia Pacific)
00800.6334.4673 (Europe)
800.437.8181 (United States)
928.779.2771 (United States)

goremedical.com