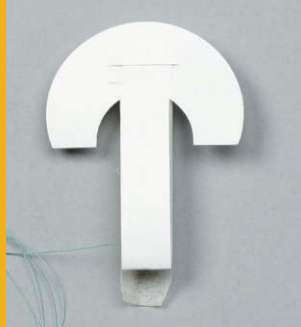


Instructional loading card

GORE® SEAMGUARD® Bioabsorbable Staple Line Reinforcement

CARTRIDGE SLEEVE

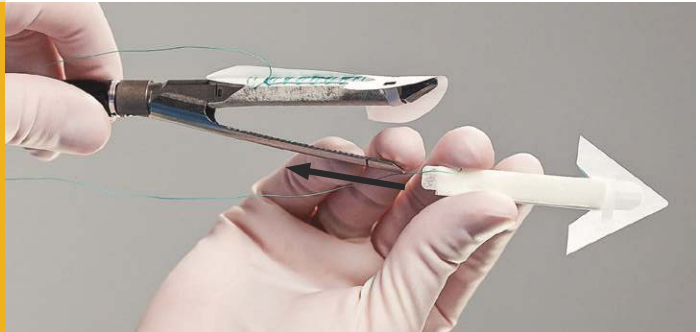


ANVIL SLEEVE



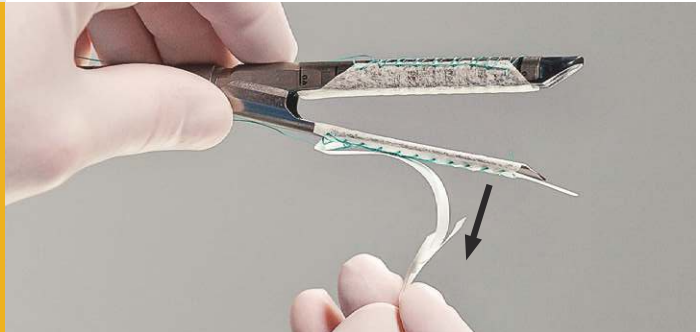
Slide the GORE® SEAMGUARD® Bioabsorbable Staple Line Reinforcement sleeves onto the appropriate stapler jaws. Position the bioabsorbable material so all of the staple holes and divots are covered.

1



Remove the TYVEK® inserts by separating the distal TYVEK® sections from the underlying tabs, then sliding proximally to release.

2



Ensure that the suture material is not inside the stapler jaw when closing and positioning the stapler. Before firing, pull the suture to release the GORE® SEAMGUARD® Bioabsorbable Staple Line Reinforcement devices from the stapler jaws. Fire the stapler.

3



SEAMGUARD®
BIOABSORBABLE

STAPLE LINE REINFORCEMENT

CONFIGURED FOR ENDOSCOPIC STAPLERS

STAPLING DEVICE	CARTRIDGE COLOR	CATALOGUE NUMBER
ETHICON ENDOPATH® ETS 45 Endoscopic Transecting	White, Blue, Green	1BSGETS45 / 12BSGETS45*
ETHICON ENDOPATH® ETS Flex 45	White, Blue, Green	1BSGETS45 / 12BSGETS45*
ETHICON ENDOPATH® EZ 45	Blue, Green	1BSGEZ45 / 12BSGEZ45*
ETHICON ENDOPATH® ETS Flex 60	White, Blue, Green	1BSGETS60 / 12BSGETS60*
ETHICON ECHELON 45 ENDOPATH® Stapler	White, Blue, Gold, Green	1BSGEC45 / 12BSGEC45*
ETHICON ECHELON 60 ENDOPATH® Stapler	White, Blue, Gold, Green	1BSGEC60 / 12BSGEC60*
ETHICON ECHELON FLEX 60 ENDOPATH®	White, Blue, Gold, Green	1BSGEC60A / 12BSGEC60A*
MEDTRONIC ENDO GIA Universal Straight 45	White, Blue	1BSGUSS45B / 12BSGUSS45B*
MEDTRONIC ENDO GIA Universal Roticulator 45	White, Blue	1BSGUSS45B / 12BSGUSS45B*
MEDTRONIC ENDO GIA Universal Straight 45	Green	1BSGUSS45G / 12BSGUSS45G*
MEDTRONIC ENDO GIA Universal Roticulator 45	Green	1BSGUSS45G / 12BSGUSS45G*
MEDTRONIC ENDO GIA Universal Straight 60	White, Blue	1BSGUSS60B / 12BSGUSS60B*
MEDTRONIC ENDO GIA Universal Roticulator 60	White, Blue	1BSGUSS60B / 12BSGUSS60B*
MEDTRONIC ENDO GIA Universal Straight 60	Green	1BSGUSS60G / 12BSGUSS60G*
MEDTRONIC ENDO GIA Universal Roticulator 60	Green	1BSGUSS60G / 12BSGUSS60G*
Configured specifically for the Medtronic Endo GIA Reloads with Tri-Staple Technology		
MEDTRONIC ENDO GIA Ultra Universal Staplers	Purple	1BSGTRI45P / 12BSGTRI45P*
MEDTRONIC ENDO GIA Ultra Universal Staplers	Purple	1BSGTRI60P / 12BSGTRI60P*
MEDTRONIC ENDO GIA Ultra Universal Staplers	Black	1BSGTRI45B / 12BSGTRI45B*
MEDTRONIC ENDO GIA Ultra Universal Staplers	Black	1BSGTRI60B / 12BSGTRI60B*

* Twelve packages per box

CONFIGURED FOR CIRCULAR STAPLERS

STAPLING DEVICE	CATALOGUE NUMBER
ETHICON ENDOPATH® 25 and Proximate 25 (Staplers: ECS25, CDH25, SDH25)	1BSGC25
ETHICON ENDOPATH® 29 and Proximate 29 (Staplers: ECS29, CDH29, SDH29)	1BSGC2829
ETHICON ENDOPATH® 33 and Proximate 33 (Staplers: ECS33, CDH33, SDH33)	1BSGC3334
MEDTRONIC CEEA 25 (Staplers: 110214L, 111985)	1BSGC25
MEDTRONIC CEEA 28 (Staplers: 110238L, 111987)	1BSGC2829
MEDTRONIC CEEA 31 (Staplers: 110276L, 111989)	1BSGC31
MEDTRONIC CEEA 34 (Stapler: 111981)	1BSGC3334
MEDTRONIC DST Series CEEA 25 (Staplers: EEA25, EEAXL25, EEA2535, EEAXL2535, EEAORVIL25)	1BSGC25
MEDTRONIC DST Series CEEA 28 (Staplers: EEA28, EEAXL28, EEA2835, EEAXL2835)	1BSGC2829
MEDTRONIC DST Series CEEA 31 (Staplers: EEA31, EEAXL31)	1BSGC31
MEDTRONIC DST Series CEEA 34 (Staplers: EEA34, EEAXL34)	1BSGC3334



W. L. GORE & ASSOCIATES, INC.
Flagstaff, AZ 86004

+65.67332882 (Asia Pacific)
00800.6334.4673 (Europe)
800.437.8181 (United States)
928.779.2771 (United States)

goremedical.com

Refer to *Instructions For Use* at goremedical.com for a complete description of all warnings, precautions, and adverse reactions. Rx only

Products listed may not be available in all markets.

ETHICON, ECHELON, ENDOPATH®, and PROXIMATE® are trademarks of Ethicon, Inc. MEDTRONIC, CEEA, DST Series, ENDO GIA, and TRI-STAPLE are trademarks of Medtronic, Inc. DUPONT, and TYVEK® are trademarks of E. I. du Pont de Nemours and Company or its affiliates.

GORE®, SEAMGUARD®, and designs are trademarks of W. L. Gore & Associates.
© 2017 W. L. Gore & Associates, Inc. AW0886-EN1 OCTOBER 2017