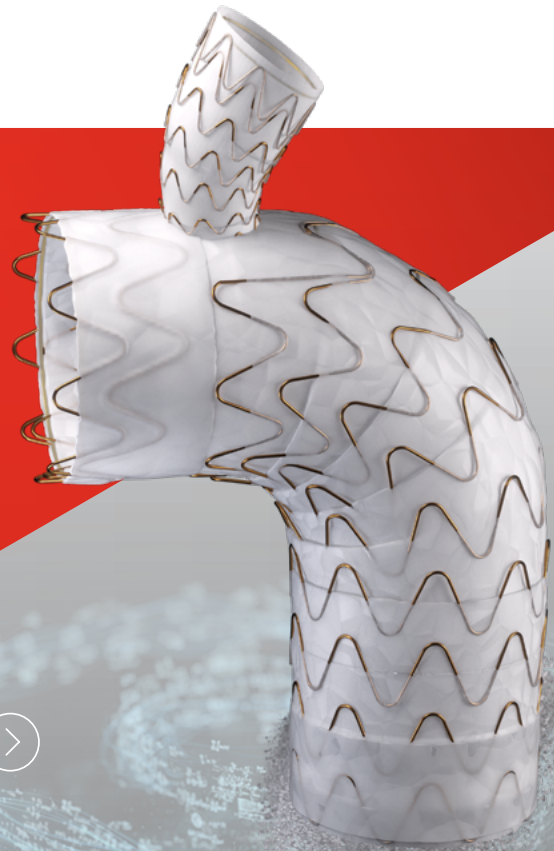


**GORE® TAG®**  
Thoracic Branch Endoprosthesis

# FINALLY, AN OFF-THE-SHELF ZONE 2 TEVAR DEVICE



GET STARTED



*Together, improving life*





# First-of-its kind FDA / MDR CE MARK approved device

Designed for simplified, minimally invasive zone 2 TEVAR procedures.

- Deliver results without the potential risk and complexity of surgical revascularization.

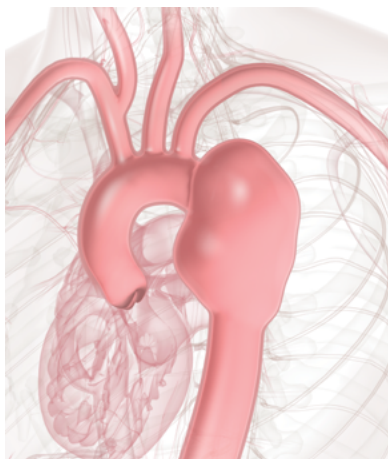


# ~40%

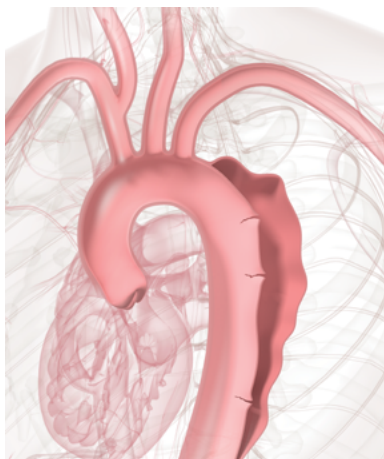
of all TEVARs involve zone 2 landing<sup>1</sup>

GORE® TAG® Thoracic Branch Endoprosthesis is now approved for zone 2 and is intended for endovascular repair of all lesions of the descending thoracic aorta.

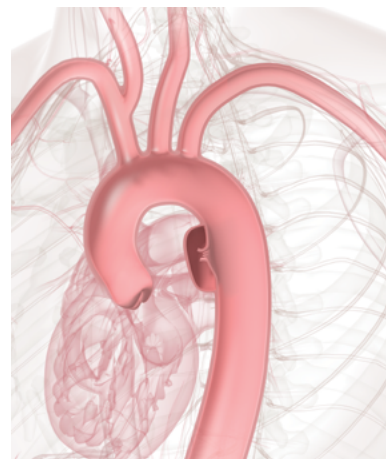
Thoracic aneurysms



Type B dissections



Traumatic transections



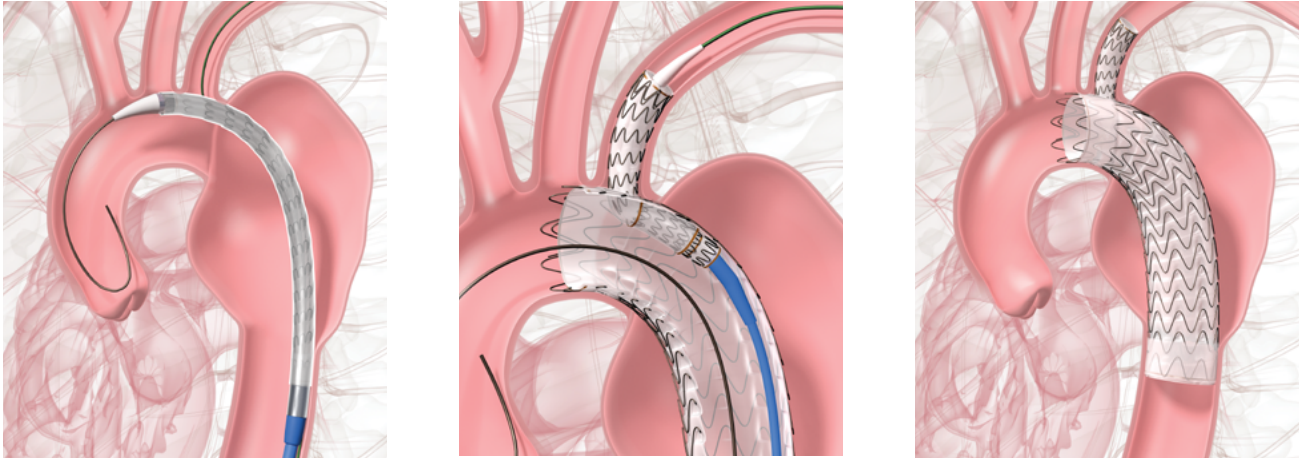
SEE THE DATA



# Off-the-shelf, single device, single procedure.

Eliminates the surgical staging and procedure to help simplify the treatment of zone 2 left subclavian artery (LSA) revascularization.

25% potential reduction in hospital length of stay<sup>2</sup>



WATCH THE DEPLOYMENT



## High patency, low disabling stroke rate:



99.2% LSA branch patency<sup>\*,†,3</sup>



3.4% Disabling stroke rate<sup>†,3</sup>



Avoid LSA surgical revascularization procedure and related risks<sup>2</sup>

\* 100% freedom from reintervention due to loss of LSA patency.

† Through 12 months.

Device Sizing Guide



# Device Sizing Guide

## Device dimensions and sizing requirements

### GORE® TAG® Thoracic Branch Endoprosthesis with 8 mm portal

Aortic Component and Aortic Component delivery system

Catalogue number	Device diameter (mm)	Intended aortic diameters (mm)	Internal portal diameter (mm)	Proximal segment length (mm)	Proximal covered length (mm)	Partially uncovered stent length (mm)	Overall device length (cm)	GORE® DrySeal Flex Introducer Sheath size (Fr)
TAC082110E	21	16–19.5	8	20	17	3	10	20
TAC082610E	26	19.5–24	8	20	16	4	10	20
TAC082615E	26	19.5–24	8	20	16	4	15	20
TAC082810E	28	22–26	8	20	16	4	10	22
TAC082815E	28	22–26	8	20	16	4	15	22
TAC082820E	28	22–26	8	20	16	4	20	22
TAC083115E	31	24–29	8	20	16	4	15	22
TAC083120E	31	24–29	8	20	16	4	20	22
TAC083415E	34	27–32	8	20	15	5	15	24
TAC083420E	34	27–32	8	20	15	5	20	24
TAC083715E	37	29–34	8	25	20	5	15	24
TAC083720E	37	29–34	8	25	20	5	20	24
TAC084015E	40	31–37	8	25	19	6	15	26
TAC084020E	40	31–37	8	25	19	6	20	26
TAC084515E	45	34–42	8	25	18.5	6.5	15	26
TAC084520E	45	34–42	8	25	18.5	6.5	20	26

### GORE® TAG® Thoracic Branch Endoprosthesis

8 mm side Branch Component

Catalogue number	Device diameter (mm)	Intended branch vessel diameter (mm)	Portal segment diameter (mm)	Overall device length (cm)	Required branch vessel length (cm)
TSB080806E	8	6–7.5	8	6	3
TSB081006E	10	7.5–9	8	6	3
TSB081206E	12	9–11	8	6	3
TSB081506E	15	11–13	8	6	3
TSB081706E	17	13–15	8	6	3

**GORE® TAG® Thoracic Branch Endoprosthesis with 12 mm portal**

Aortic Component and Aortic Component delivery system

Catalogue number	Device diameter (mm)	Intended aortic diameters (mm)	Internal portal diameter (mm)	Proximal segment length (mm)	Proximal covered length (mm)	Partially uncovered stent length (mm)	Overall device length (cm)	GORE® DrySeal Flex Introducer Sheath size (Fr)
TAC123115E	31	24–29	12	40	36	4	15	22
TAC123120E	31	24–29	12	40	36	4	20	22
TAC123415E	34	27–32	12	40	35	5	15	24
TAC123420E	34	27–32	12	40	35	5	20	24
TAC123715E	37	29–34	12	40	35	5	15	24
TAC123720E	37	29–34	12	40	35	5	20	24
TAC124015E	40	31–37	12	40	34	6	15	26
TAC124020E	40	31–37	12	40	34	6	20	26
TAC124515E	45	34–42	12	40	33.5	6.5	15	26
TAC124520E	45	34–42	12	40	33.5	6.5	20	26

**GORE® TAG® Thoracic Branch Endoprosthesis**

12 mm side Branch Component

Catalogue number	Device diameter (mm)	Intended branch vessel diameter (mm)	Portal segment diameter (mm)	Overall device length (cm)	Required branch vessel length (cm)
TSB121506E	15	11–13	12	6	2.5
TSB121706E	17	13–15	12	6	2.5
TSB122006E	20	15–18	12	6	2.5

**GORE® TAG® Thoracic Branch Endoprosthesis**

Aortic Extender and Aortic Extender delivery system

Catalogue number	Device diameter (mm)	Intended aortic diameters (mm)	Overall device length (cm)	Partially uncovered stent length (mm)	GORE® DrySeal Flex Introducer Sheath size (Fr)
TE2136E	21	16–19.5	3.6	3	20
TE2638E	26	19.5–24	3.8	4	20
TE2840E	28	22–26	4	4	22
TE3140E	31	24–29	4	4	22
TE3442E	34	27–32	4.2	5	24
TE3742E	37	29–34	4.2	5	24
TE4043E	40	31–37	4.3	6	26
TE4546E	45	34–42	4.6	6.5	26



## References

1. OP916 Dake MD, Brinkman WT, Han SM, *et al.* Outcomes of endovascular repair of aortic aneurysms with the GORE® Thoracic Branch Endoprosthesis for left subclavian artery preservation. *Journal of Vascular Surgery*. In press. Open access <https://www.sciencedirect.com/science/article/pii/S0741521422016421>.
2. Squiers JJ, DiMaio JM, Schaffer JM, *et al.* Surgical debranching versus branched endografting in zone 2 thoracic endovascular aortic repair. *Journal of Vascular Surgery* 2022;75(6):1829-1836.e3.
3. Brown J, Gorman J, Sondreaal M, Powis S. *Evaluation of the GORE®TAG® Thoracic Branch Endoprosthesis (TBE Device) in the Treatment of Lesions of the Descending Thoracic Aorta (Pivotal): Zone 2*. Flagstaff, AZ: W. L. Gore & Associates, Inc; 2021. [Pre-Market Approval Study Report]. MD185099. Rev 1.

 Consult Instructions  
for Use  
[eifu.goremedical.com](http://eifu.goremedical.com)

Refer to *Instructions for Use* at [eifu.goremedical.com](http://eifu.goremedical.com) for a complete description of all applicable indications, warnings, precautions and contraindications for the markets where this product is available. Rx Only

Products listed may not be available in all markets.

CBAS is a trademark of Carmeda AB, a wholly owned subsidiary of W. L. Gore & Associates, Inc.

GORE, *Together, improving life*, TAG and designs are trademarks of W. L. Gore & Associates.

© 2023 W. L. Gore & Associates, Inc. 231141782-EN NOVEMBER 2023

---

**W. L. Gore & Associates, Inc.**

[goremedical.com](http://goremedical.com)

**Asia Pacific** +65 6733 2882 **Australia/New Zealand** 1800 680 424 **Europe** 00800 6334 4673

**United States** Flagstaff, AZ 86004 800 437 8181 928 779 2771

